



December 1995

South Australian Economic Indicators

ABS PUBLICATIONS, SOUTH AUSTRALIA

Cat. No.	Publication	Latest issue	Date of issue
GENERAL			
1202.4	Information Paper : Guidelines for the Development of Community Surveys <i>irr</i>		14 Nov. 1985
1301.4	South Australian Year Book <i>a</i> (\$29.50)	1995	25 Nov. 1994
1302.4	Pocket Year Book of South Australia <i>a</i> (\$8.50)	1995	1 May 1995
1304.4	Local Government Area Statistics <i>irr</i> (\$20.00)	1993	30 July 1993
1306.4	South Australia at a Glance <i>a</i>	1995	24 Mar. 1995
1307.4	South Australian Economic Indicators <i>m</i> (\$12.00)	Nov. 1995	2 Nov. 1995
1352.4	Sales of Goods and Services by Businesses Involved in Water Related Activity in South Australia <i>irr</i> (\$10.00)	1992-93 and 1993-94	7 July 1995
POPULATION AND VITAL STATISTICS			
2840.4	Adelaide, a Social Atlas <i>irr</i> (\$45.00)	Census 1991	31 Mar. 1993
2841.4	Aboriginal People in South Australia <i>irr</i> (\$15.00)	Census 1991	11 Feb. 1994
3201.4	Estimated Resident Population in Statistical Local Areas, Preliminary <i>a</i> (\$10.70)	30 June 1992	15 Apr. 1993
3202.4	Estimated Resident Population in Statistical Local Areas <i>irr</i> (\$10.00)	June 1986 to 1991	28 Oct. 1993
3204.4	Estimated Resident Population by Age and Sex in Statistical Local Areas <i>a</i> (\$25.00)	30 June 1994	21 Apr. 1995
3311.4	Demography <i>a</i> (\$30.00)	1993	20 Feb. 1995
3312.4	Deaths <i>a</i> (\$15.00)	1993	6 Dec. 1994
SOCIAL STATISTICS			
4104.4	Aboriginal Births and Deaths, Review of Data Quality and Statistical Summary <i>irr</i> (\$9.50)	1988	16 Mar. 1990
4402.4	Community and Volunteer Work <i>irr</i> (\$7.50)	Oct. 1988	4 Aug. 1989
4509.4	Crime and Safety <i>irr</i> (\$11.50)	Apr. 1995	31 Aug. 1995
PUBLIC FINANCE			
5502.4	Local Government Finance <i>a</i> (\$10.70)	1991-92	21 May 1993
5503.4	State and Local Authorities Finance <i>a</i> (\$13.30)	1991-92	2 July 1993
LABOUR FORCE			
6201.4	Labour Force <i>q</i> (\$16.50)	May 1994	14 July 1994
6204.4	Womens Work <i>irr</i> (\$3.00)	July 1992	23 July 1992
6215.4	Women's Employment Patterns, Adelaide Statistical Division <i>irr</i> (\$10.00)	Nov. 1992	17 Feb. 1993
RURAL			
7111.4	Principal Agricultural Commodities, Preliminary <i>a</i> (\$11.00)	1993-94	12 Aug. 1994
7113.4	Agriculture <i>a</i> (\$27.00)	1993-94	16 Nov. 1995
7120.4	Agricultural Statistics : Selected Small Area Data <i>a</i> (\$16.50)	1992-93	11 May 1994
7221.4	Livestock and Livestock Products <i>a</i> (\$16.50)	1992-93	11 Feb. 1994
7330.4	Summary of Crops <i>a</i> (\$22.00)	1992-93	18 Mar. 1994
7503.4	Value of Agricultural Commodities Produced <i>a</i> (\$16.50)	1992-93	19 May 1994
MANUFACTURING			
8221.4	Manufacturing Industry <i>a</i> (\$16.50)	1991-92	31 Oct. 1994
INTERNAL TRADE			
8623.4	Retailing in South Australia <i>irr</i> (\$15.00)	1991-92	21 Jan. 1994
8635.4	Tourist Accommodation <i>q</i> (\$25.00)	June qtr 1995	22 Sept. 1995
BUILDING			
8710.4	Housing and Locational Preferences, Adelaide Statistical Division <i>irr</i> (\$10.00)	1991	23 Aug. 1991
8731.4	Building Approvals <i>m</i> (\$12.00)	Sept. 1995	1 Nov. 1995
8741.4	Dwelling Unit Commencements Reported by Approving Authorities <i>m</i> (\$11.00)	Aug. 1995	15 Nov. 1995
8752.4	Building Activity <i>q</i> (\$12.00)	June qtr 1995	16 Oct. 1995
TRANSPORT			
9203.4	Drivers and Passengers : Travel to Work, Adelaide Statistical Division <i>irr</i> (\$10.00)	Oct. 1993	14 Dec. 1993

SOUTH AUSTRALIAN ECONOMIC INDICATORS

DECEMBER 1995

P.M. GARDNER
Deputy Commonwealth Statistician
and Government Statist

© Commonwealth of Australia 1995

Produced by the Australian Government Publishing Service

PREFACE

South Australian Economic Indicators is a monthly publication which contains the latest available data at the time of preparation for a range of statistical series that have been identified as indicators of economic activity in this State. In a number of cases the figures presented are preliminary and subject to revision in subsequent issues.

Written and graphic commentary have been included for many of the selected series and analysis has been augmented with the calculation of the percentage change from the previous reference period together with the presentation of comparative Australian data.

Time series information has been included to provide a historical perspective on many of the selected indicators. Future issues may be expanded to include further historical data in response to expressed user needs. This product is under continuous review and any suggestions for enhancement will be welcomed.

More detailed information on each series, including explanatory and technical notes, can be obtained from other Australian Bureau of Statistics publications or alternative data sources. To assist those seeking further information a source publication for each of the series has been documented in the statistical summary.

This issue includes a special article entitled *State Accounts: Trends in Economic Activity*. Future issues will contain further articles on statistical topics which concentrate on longer term trends or other issues pertinent to the South Australian economy.

If you have any inquiries concerning this publication please contact the editor, Brian Moody, telephone (08) 237 7315. All requests for statistical information should be directed to the ABS Information Service, GPO Box 2272, Adelaide SA 5001, telephone (08) 237 7100.

P.M.GARDNER
Deputy Commonwealth Statistician
and Government Statist

Australian Bureau of Statistics
Adelaide
November 1995

CONTENTS

	Page
Preface	iii
REVIEW	2
Overview	
State accounts	
International accounts	
Consumption and investment	
Production	
Prices	
Labour force and demography	
Incomes	
Financial markets	
Forward Outlook	
STATISTICAL SUMMARY	14
State accounts	
International accounts	
Consumption and investment	
Production	
Prices	
Labour force and demography	
Incomes	
Financial markets	
FOCUS	
State Accounts: Trends in Economic Activity	16
TIME SERIES	
State accounts - current prices	20
State accounts - average 1989-90 prices	21
Merchandise exports by commodity group	22
Merchandise exports by country	22
Merchandise exports by industry of origin	23
Merchandise imports by commodity group	23
Turnover of retail establishments by industry	24
New motor vehicle registrations by type of vehicle	25
Actual private new capital expenditure by selected industry and type of asset	26
Tourist accommodation	27
Building approvals	28
Building commencements	29
Value of building work done during period	29
Production, livestock and selected commodities	30
Consumer price index, by group	32
Average retail prices of selected consumer items	33
Estimated resident population and components of population change	33
Labour force - numbers	34
Labour force - rates	35
Average weekly earnings of employees	36
Finance commitments	37
For more information	38

REVIEW

Overview

- The June quarter 1995 trend estimate for private new capital expenditure in South Australia was 6.7% below the March quarter estimate.
- The trend estimate for employed persons in South Australia has fallen in September and October 1995 following a general increase between January and August 1995.
- The trend unemployment rate for South Australia has declined gradually over the past twelve months from 10.3% in October 1994 to 9.6% in October 1995.
- The trend estimate for the number of dwelling units approved in South Australia during September 1995 was 1.9% higher than in the previous month, but 40.0% below the September 1994 estimate.
- The September 1995 trend estimate for retail turnover in South Australia was 0.6% higher than that the estimate for the previous month.
- The South Australian trend estimate for new motor vehicle registrations in September 1995 decreased by 1.7% from August. This is the fifth month of trend decline following an eight month period of growth.
- The September trend estimate for total value of housing finance commitments in South Australia was 2.1% higher than the August estimate, but was 1.5% lower than in September 1994.
- Gross State Product (trend estimates in 1989-90 prices) grew by 1.3% in the June quarter 1995 and by 2.1% in 1994-95. This compared with national increases of 0.3% and 2.8% respectively.
- In September 1995 the total value of overseas exports of commodities produced in South Australia was 13.3% lower than in the previous month and 16.8% below the level of September 1994. Merchandise imports into South Australia fell 32.0% from the previous month and were 11.9% lower than in September 1994.

State Accounts

NOTE: Deficiencies in the data sources used to estimate gross operating surplus for recent quarters may at times lead to the current price estimates of Gross State Product(I) being under or over stated for particular states. Consequently, the measured growth rate for constant price GSP(I) for those states will also be affected.

The constant price series for Gross State Product (GSP) have been labelled as 'experimental'. Users are cautioned that these estimates are derived indirectly by calculating a deflator from the expenditure components. It is emphasised that, at times, movements that can not be fully explained may be introduced into the constant price GSP(I) series through the use of this proxy deflator.

Trend Estimates (Current Prices) The Gross State Product (GSP) trend estimate in current prices for the June quarter 1995 rose 1.5% from the previous quarter to be 4.7% above the estimate for the June quarter 1994.

Wages, salaries and supplements increased by 0.7% in the June quarter and had risen by 2.3% over the twelve month period, well below the national increase of 7.7%.

Increases in gross operating surplus exceeded the corresponding national growth rates from the June quarter 1994 following a 2.0% rise in the June quarter 1995. The June quarter 1995 estimate was 7.3% higher than for the same period last year.

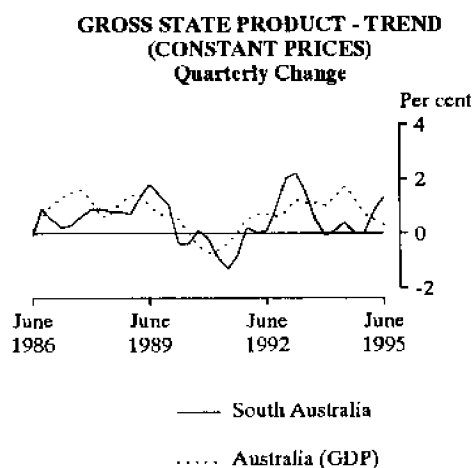
The rate of growth in indirect taxes less subsidies increased in the June quarter, with a rise of 3.2%, while growth over the year to the June quarter 1995 was 6.4%.

Trend Estimates (Constant Prices)

The trend estimate for South Australian State Final Demand (SFD) in constant 1989-90 prices increased by 0.4% in the June quarter to a level 5.6% above that of the June quarter 1994.

Private final consumption expenditure increased by 1.6% in the June quarter. Private gross fixed capital expenditure on equipment was the major contributor to the decline in private gross fixed capital expenditure of 7.6%. Private expenditure on dwellings fell for the third consecutive quarter.

The increase of 2.7% in public final demand for the June quarter 1995 was the largest increase for several years. Government consumption rose for the first time since June quarter 1994 and contributed 0.5% to the growth in SFD.



The experimental GSP trend estimate in 1989-90 prices, grew by 1.3% in the June quarter 1995, well above the national average of 0.3% for that quarter. However the South Australian increase of 2.1% for the year was below the national figure of 2.8%.

Experimental estimates of real Gross State Income (real GSI) *i.e.* GSP(I) adjusted for the terms of trade effect, also rose by 1.3% in the June quarter 1995. The terms of trade showed no change.

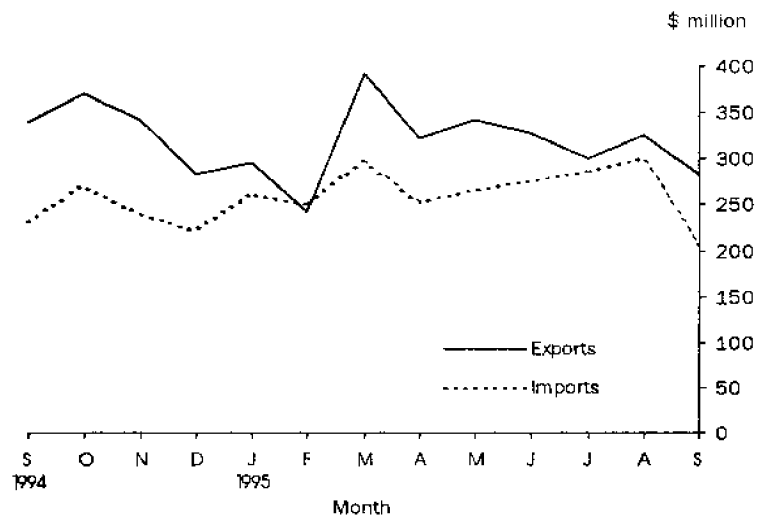
International Accounts

Exports

In September 1995 the total value of overseas exports of South Australian produced commodities was \$282 million. This compares with a total value of \$325 million in the previous month and \$339 million in September 1994. The average monthly value of exports during 1994-95 was \$319 million. The relatively low September 1995 figure reflected a fall of \$44 million from August in the value of exports to East Asia.

It is not unusual for both exports and imports to fluctuate greatly from month to month, and the decrease in exports to East Asia was inconsistent with recent trends. Exports to East Asia in 1994-95 were 5.4% higher than in the previous year, and more than double the level of five years earlier.

MERCHANDISE EXPORTS AND IMPORTS



Imports

The value of overseas imports into South Australia (designated as the State of final destination) was \$204 million. This compares with \$300 million in the previous month; \$231 million in September last year; and an average monthly value of \$258 million during 1994-95.

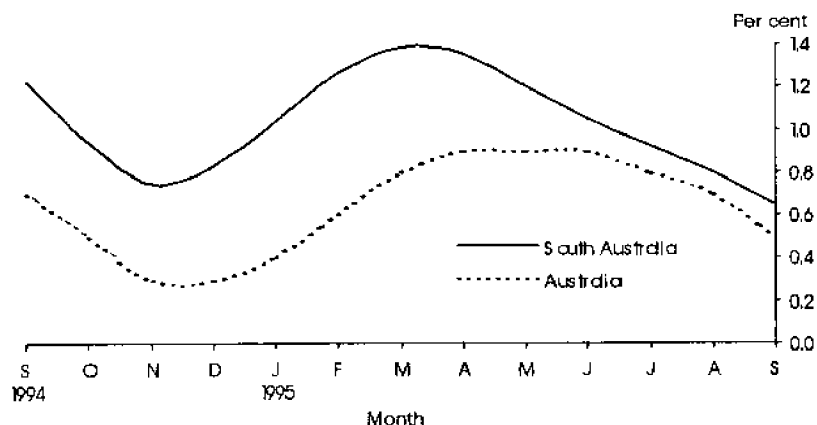
Consumption and Investment

Retail Turnover

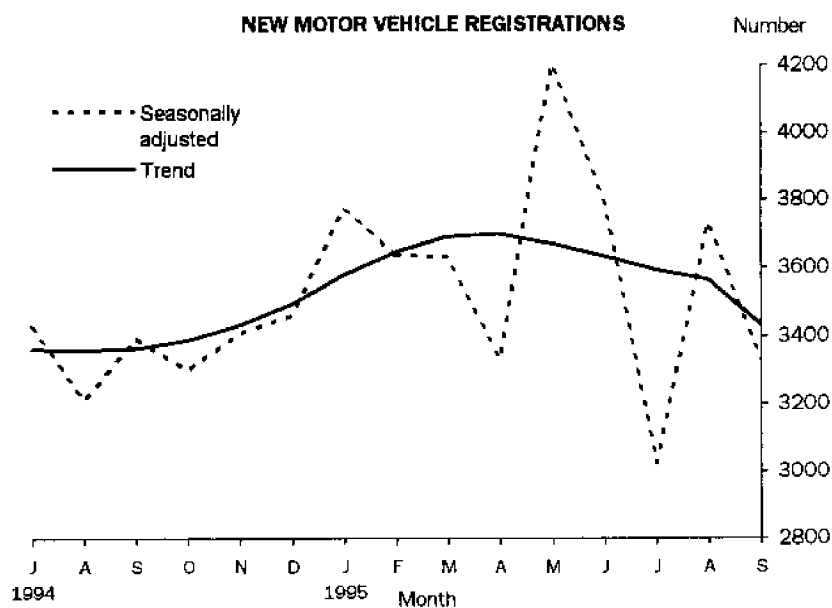
The retail trade trend estimate indicates that monthly retail turnover in South Australia increased by 0.6% in September 1995 compared with an Australian rise of 0.5%. Over the past three months, the trend estimate has increased by \$11.1 million of which \$8.2 million was attributable to the food retailing group, \$2.6 million to the hospitality and services group and \$2.6 million to other retailing. Strong growth in these industry groups has been partly negated by the decline in turnover in the department stores and household good retailing groups.

In seasonally adjusted terms retail trade in September 1995 increased by 0.6% from August 1995. In original terms, South Australian retail turnover was \$747.5 million for September 1995, an increase of 11.5% over September 1994.

RETAIL TURNOVER
PERCENTAGE CHANGE FROM PREVIOUS MONTH
Trend Estimates



New Motor Vehicle Registrations The South Australian provisional trend estimate for new motor vehicle registrations in September 1995 decreased by 1.7% from August. This is the fifth month of trend decline following an eight month period of growth. The seasonally adjusted estimate for September 1995 decreased by 10.9% from August 1995 and 2.0% from September 1994.



In original terms, there were 3,452 new motor vehicles registered in September 1995, a decrease of 12.9% from the previous month and 4.6% from September 1994. For new passenger vehicles only, the leading makes registered in September 1995 were Holden (777 vehicles), Ford (656), Mitsubishi (441), Toyota (355) and Hyundai (159).

Tourist Accommodation

When the June quarter 1995 is compared with the June quarter 1994, caravan capacity available in South Australia increased by 2.2% from 24,136 to 24,657 powered and unpowered sites, on-site vans and cabins. The number of site nights occupied increased by 2.9% from 587,800 to 605,000 and the site occupancy rate rose from 26.9% to 27.1%. Accommodation takings rose by 10.7%, from \$6.4 million to \$7.1, million with the average takings per site increasing from \$11 to \$12.

Private New Capital Expenditure The trend estimate for private new capital expenditure in South Australia for the June quarter 1995 was 6.7% lower than in the previous quarter. The fall for South Australia went against the national trend, with all other States recording increases and the national estimate rising by 4.2%. The South Australian estimate for the quarter now represents only 5.3% of the national estimate.

Private new capital expenditure in original terms for the June quarter 1995 was \$504 million, an increase of 10.4% over the March quarter. Buildings and structures accounted for \$77 million of this expenditure, and equipment, plant and machinery for \$427 million.

Production

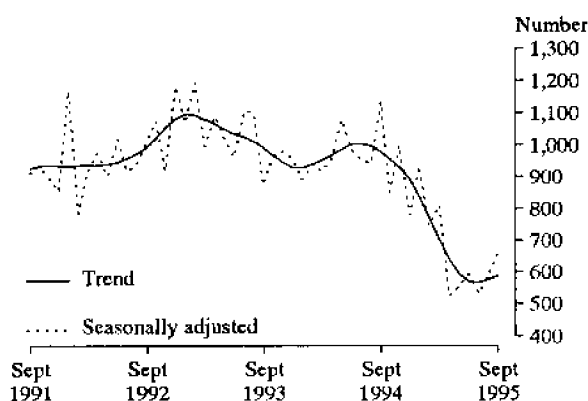
Dwelling Approvals

The trend estimate for the number of dwelling units approved in South Australia during September 1995 was 587, an increase of 1.9% over the previous month, and a decrease of 40.0% from September 1994. The original number of dwelling units approved in September 1995 was 592, a decrease of 11.8% from August 1995.

The national trend estimate for the total number of dwelling units approved in September 1995 (10,659) was 2.0% lower than for August, and 35.1% lower than the September 1994 estimate. In original terms, South Australia represented 5.3% of the total dwelling units approved in Australia during September 1995.

The total number in original terms of dwelling units approved in Australia was 11,068, a decrease of 39.4% from September 1994.

DWELLING UNITS APPROVED



Dwelling Commencements

From the Building Activity Survey, it was estimated that 1,767 dwelling units were commenced in South Australia during the June quarter 1995, the lowest for 14 years. The latest figure represented a further fall of 297 dwelling units (14.4%) from the previous quarter and can be compared with a small rise of 1.9% nationally. The latest figure for South Australia was 38.6% below the total for the June quarter 1994 while the national decrease over the twelve month period was 23.1%.

Value of Non-residential Building Approvals

Non-residential building approvals for South Australia in September 1995 were valued at \$31.1 million. This was a slight decrease from the previous month and was 6.0% lower than the September 1994 value. In September 1995 South Australia contributed 3.6% to the total value of Australian non-residential building approvals of \$864.7 million.

Value of Total Building Activity

The total value of *building work commenced* in South Australia during the June quarter 1995 recorded a 37.8% recovery to \$394.7 million from the previous quarter's low of more than 8 years. Recovery was confined to the non-residential sector and was mainly due to two large public sector jobs, one for \$48.0 million and one for \$55.0 million in the offices and educational categories respectively. Compared with the June quarter 1994, the latest figure for South Australia represented a 17.1% increase in building commencements while the corresponding national movement was a 12.3% decrease. However, the State's share of the national total of building commencements in the June quarter was only 6.1%.

The total value of *building work done* during the June quarter 1995 increased by a relatively modest 4.9% from the March quarter to \$333.0 million. This movement compared with an increase of 9.1% nationally and resulted in a fall in this State's share of the total Australian value to 4.8%. Compared with the June quarter 1994, the latest figure for South Australia represented a 6.8% decrease in the value of total building work done, while there was a corresponding 1.4% increase nationally.

After falling for 11 successive quarters, the value of *building work yet to be done* in South Australia rose 23.7% to \$350.9 million at the end of June 1995, in contrast to a national decrease of 1.8%.

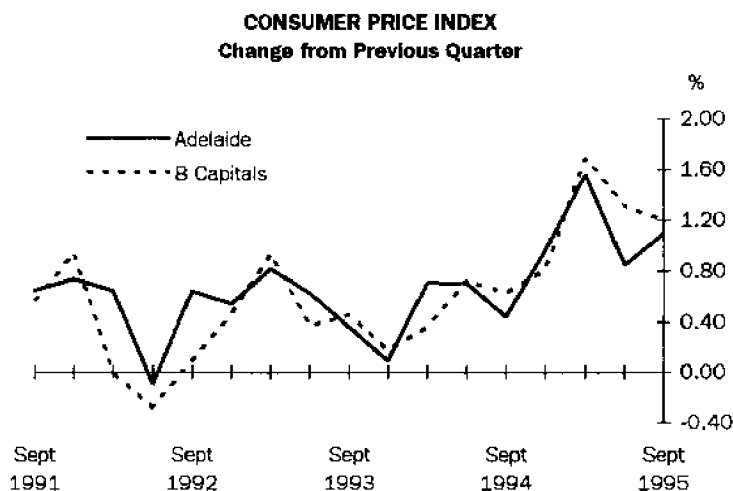
Value of Engineering Construction

In the June quarter 1995 engineering construction work done in South Australia increased by 27.9% over the previous quarter to \$201.0 million, resulting in the State's share of the national total increasing slightly to 5.4%.

Prices

Consumer Price Index

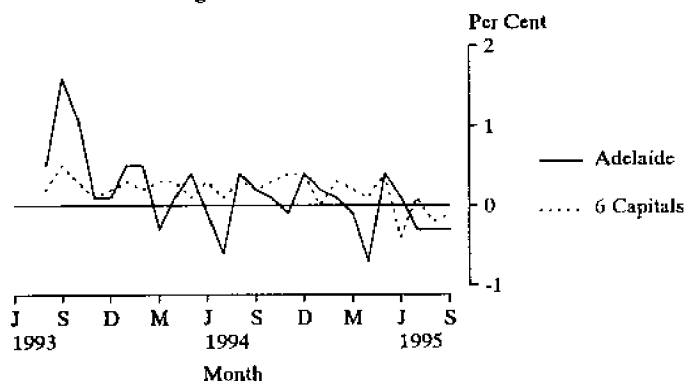
In the September quarter 1995 the all groups Consumer Price Index increased by 1.2% nationally, contributing to an annual increase of 5.1%. For Adelaide, the quarterly movement was 1.1% while the annual increase was 4.5%.



House Building Materials

Over the twelve months to September 1995, Adelaide was the only State capital to record a decrease (0.4%) in the Price Index of Materials used in House Building. Hobart recorded the largest increase (4.3%) for the same period, followed by Perth (3.1%) and Sydney (2.1%). The weighted average of the six state capitals rose by 1.5% over the twelve month period. In September 1995, falls in the Price Index from the previous month were recorded in Adelaide (0.3%), Melbourne (0.3%) and Perth (0.1%), with other state capitals recording no change. Nationally, there was a decrease of 0.1% in the Index for the weighted average of the six state capitals.

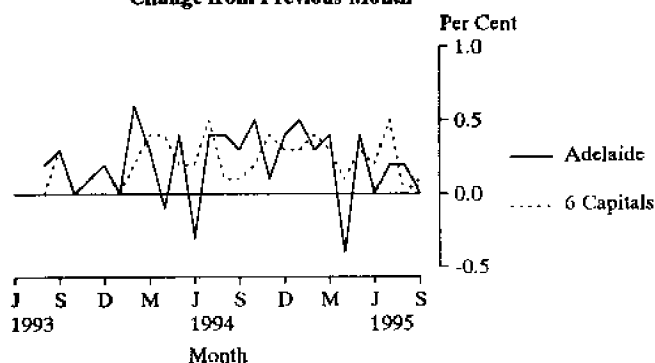
MATERIALS USED IN HOUSE BUILDING Change from Previous Month



Non-house Building Materials

Rises ranging from 2.5% (Adelaide) to 3.5% (Hobart) were recorded in the Price Index of Materials Used in Building Other Than House Building over the twelve months to September 1995. The increase in the weighted average of the six state capitals was 2.9%. Changes in September 1995 from the previous month ranged from -0.3% in Perth to 0.3% in Brisbane. No movement in the Index was recorded in Adelaide, while the weighted average of the six state capitals rose by 0.1% in this period.

MATERIALS USED IN BUILDING OTHER THAN HOUSE BUILDING Change from Previous Month



House Prices

Between the March and June quarters 1995 the price index of established houses in Adelaide decreased by 0.4%, while project home prices rose by 0.2%. Over the same period, prices of established houses in Australia fell by 0.7% while project home prices increased by 0.6%.

In Adelaide over the twelve month period to the June quarter 1995, there was a price increase of 0.5% for established houses and an increase of 2.0% for project homes. Nationally, prices for established houses rose by 1.4% while the increase for project homes was 1.7%.

Labour Force and Demography

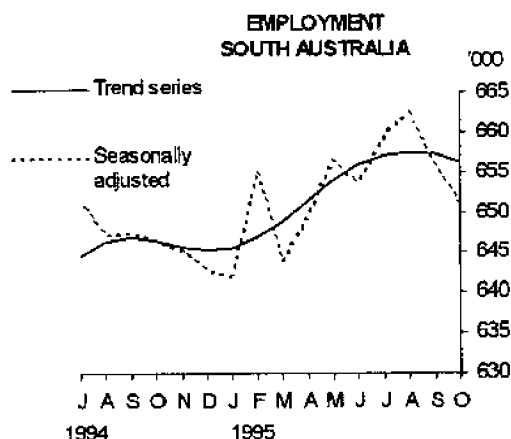
Population

At 31 March 1995 the estimated resident population of South Australia was 1,473,002. This was an increase of 0.12% (1,751) from the December quarter, and 0.32% from the March quarter 1994, well below the national annual growth rate of 1.11%. The low growth rate in this State was mainly attributable to a net outflow of 2,054 persons in interstate migration during the March quarter. This is the highest recorded quarterly interstate migration loss from South Australia.

Employment

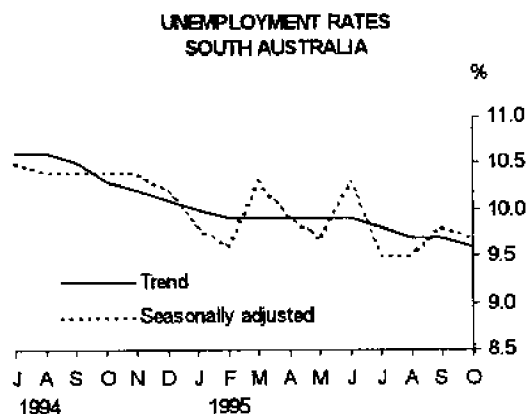
The trend estimate of employed persons in South Australia has decreased slightly over the past two months (September and October), following a general increase between January and August 1995. The October 1995 estimate (656,300) was 1.5% higher than the level of 12 months ago.

The national trend estimate of employed persons (8,254,00 in October 1995) has decreased over the past two months, reversing the general growth evident between February 1993 and August 1995. Over the past 12 months, full-time and part-time employment increased by 2.9% and 3.4 % cent respectively.



Unemployment

The trend unemployment rate for South Australia has declined gradually over the past twelve months from 10.3% in October 1994 to 9.6% in October 1995. For this same period, the trend unemployment rate for males fell from 10.9% to 10.7%, while the rate for females decreased from 9.7% to 8.3%.



By comparison, the trend estimate of the unemployment rate in Australia (8.5%) was a reversal of the general downward movement evident between January 1993 and June 1995.

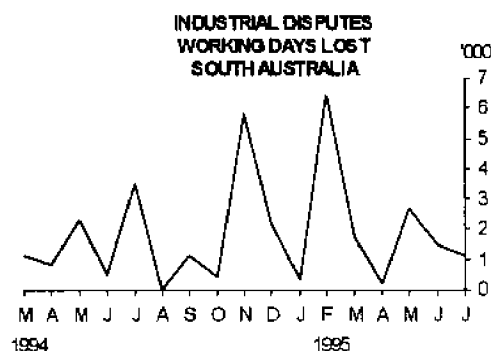
Overtime

The proportion of employees who worked overtime in South Australia in August 1995 was 15.9% compared with 18.5% in August 1994.

Industrial Disputes

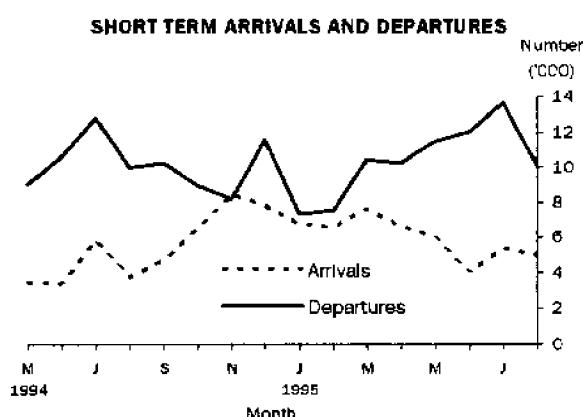
There were 1,100 working days lost through industrial disputes in South Australia during July 1995. At 3.1% of the Australian total (35,900 working days), this was a relatively low level of dispute.

In the twelve months to July 1995, 23,300 working days were lost due to industrial disputes in South Australia.



Short-term Overseas Visitor Arrivals

There were 5,003 short-term overseas visitor arrivals to South Australia in August 1995. This was a fall of 7.5% from the number of visitors in the previous month but a rise of 33.5% over the number in August 1994.



Short-term Resident Departures

The number of short term departures of South Australian residents in August 1995 was 10,075. This was 26.2% less than in July, but 0.9% more than in August 1994.

Incomes

Average Weekly Earnings

The trend estimate of average weekly ordinary time earnings of full-time adult employees in South Australia rose from \$614.60 in May 1995 to \$616.50 in August 1995. Male full-time ordinary time earnings increased from \$640.20 in May 1995 to \$641.60 in August 1995, while the comparable level for females increased from \$561.80 to \$562.10.

Between May 1995 and August 1995, the trend estimate of average weekly total earnings of all employees in South Australia decreased from \$516.00 to \$515.30.

Since it is an average of earnings across all employees, changes in average weekly earnings may occur through changes in employment as well as changes in pay levels.

Award Rates of Pay

Over the 12 months to September 1995, the weekly award rates of pay index for full-time employees in South Australia increased by 1.5%.

For full-time adult male employees, the largest annual movement of the index occurred in the recreation, personal and other services industry, with an increase of 2.7%. For full-time adult female employees, the largest annual movement of the index occurred in public administration and defence, with an increase of 2.9%.

Financial Markets

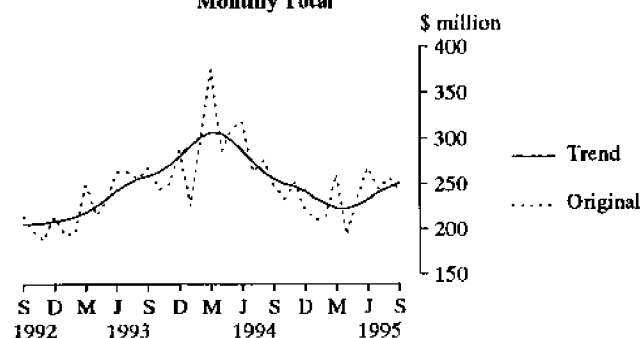
Housing Finance

The South Australian September 1995 trend estimate for total value of housing finance commitments (excluding alterations and additions) increased by 2.1% to \$251.2 million from the August estimate, but was 1.5% lower than in September 1994. The national trend estimate was up 1.1% for the month but down by 3.8% compared with the previous September.

State trend estimates are published only for total value of commitments (excluding alterations and additions) and therefore the following commentary on individual categories is based on the original series only.

Total housing finance commitments (original figures including alterations and additions) decreased by 5.3% to \$259.9 million from the previous month, and were 2.3% lower than in September 1994. The refinancing component of \$48.1 million reached 18.5% of total new lending

**SECURED HOUSING FINANCE COMMITMENTS
TO INDIVIDUALS (ALL LENDERS)
(Excluding Alterations and Additions)
Monthly Total**



Finance commitments for construction of dwellings for the past nine months were well below the equivalent months of the past two years with September 1995 14.1% below the August figure. Finance commitments for the purchase of established dwellings, the largest category, were down by 4.3% to \$149.6 million compared with the previous month and down by 11.7% compared with September 1994. Commitments for the purchase of newly erected dwellings decreased by 23.3% to \$14.7 million.

Personal Finance

Personal finance commitments in South Australia decreased by 13.0% to \$182.4 million in September 1995 following the high figures recorded in the previous months. The first nine months of 1995 were high when compared with the corresponding months in 1994.

Total personal finance commitments under fixed loan commitments fell by 7.4% to \$127.2 million in September 1995 following the high August total, and were 5.9% higher than in September 1994. Sales of used motor vehicles and station wagons, the largest category under fixed loan commitments, decreased by 11.9% to \$39.9 million during the month of September, marginally higher than September 1994. Sales of new motor vehicles and station wagons also decreased during the month, down by 15.3% to \$11.3 million, 17.4% lower than September 1994.

South Australian commercial finance commitments decreased by 15.6% to \$421.6 million in September 1995 from the August figure. This was the fourth consecutive monthly fall, but was 16.7% higher than in September 1994.

Commitments under revolving credit facilities decreased by 15.7% to \$160.0 million in September 1995 from August but were up by 21.3% from September 1994. Agriculture, forestry, fishing and hunting fell for the second consecutive month, following the high July figure. Finance, investment and insurance fell following the high figure recorded in August while commitments for property and business services doubled in value.

[illegible]

The value of goods under new finance lease commitments in South Australia decreased during September by 9.1% to \$18.2 million compared with the previous month and was 25.5% below September 1994. This was the lowest September figure for a decade and follows the relatively low August figure.

The main falls in new finance lease commitments were for the categories of construction and earth moving equipment, and shop and office furniture, fittings and equipment which declined following high figures in the previous month. Agricultural machinery and equipment increased in September following the low August new lease commitments in this category.

Lease commitments for new motor vehicles and station wagons not subject to depreciation, the largest category, increased by 16.5% to \$6.1 million, 10.6% below September 1994. Used motor vehicles and station wagons not subject to depreciation decreased by 5.4% to \$2.4 million. New motor vehicles subject to depreciation increased by 8.4% to \$1.7 million. Used motor vehicles subject to depreciation fell for the fourth consecutive month.

Forward Outlook

Composite Leading Indicator

The Composite Leading Indicator (CLI) is a single time series produced by aggregating eight individual economic indicators, and has been developed by the ABS as an experimental series to supplement existing forms of economic analysis and modelling.

The CLI summarises the early signals contained in a selection of economic indicators and is designed to help in the detection of turning points between successive expansions and contractions of economic activity but does not attempt to forecast the level of economic activity.

The main features of the Australian June quarter 1995 data were:

- confirmation of the narrowing in the deviation of GDP(A) from its long-term trend (predicted by the December 1994 CLI);
- a continuation of the downward movement in the CLI evident since the September quarter 1994 peak, and the acceleration in this downward movement (-0.28% in the December quarter 1994, -0.62% in the March quarter 1995 and -0.72% in the June quarter 1995).

The quarterly data are released in more detail in the *Australian Economic Indicators* (1350.0). The CLI was the topic of the Focus article in the September 1993 edition of *South Australian Economic Indicators* (1307.4).

Australian Business Expectations

Surveys of business expectations have been a feature of the economic intelligence available to decision makers for a number of years. The main output from these surveys has been a qualitative indicator which provides the net proportion of businesses predicting a rise or fall in future business conditions. Further details about these surveys which are conducted quarterly by the ABS are available in *Australian Business Expectations* (1250.0), the September 1994 edition of *Australian Economic Indicators* (1350.0) and the May 1994 edition of *South Australian Economic Indicators* (1307.4).

AUSTRALIAN BUSINESS EXPECTATIONS SOUTH AUSTRALIA AND AUSTRALIA SALES OF GOODS AND SERVICES EXPECTED PERCENTAGE AGGREGATE CHANGE

Reference Period	Short term(a)		Medium term(b)	
	South Australia	Australia	South Australia	Australia
1994				
June quarter	2.0	1.9	4.1	3.3
September quarter	4.5	2.3	3.2	4.1
December quarter	-0.1	-0.5	2.8	3.3
1995				
March quarter	1.8	1.4	1.1	3.0
June quarter	0.2	1.3	0.8	2.3
September quarter	1.6	2.1	2.4	3.4

(a) Short term is the following quarter.

(b) Medium term is the same quarter in the following year.

Short term

Businesses in South Australia expected a rise of 1.6% in sales in the December quarter compared with the September quarter 1995 while the national expectation was a 2.1% increase.

Medium term

Businesses in South Australia anticipated a lower growth in sales (2.4%) than the national expectation of 3.4% for the September quarter 1996 compared with the September quarter 1995.

STATISTICAL SUMMARY

Indicator		Reference period	SOUTH AUSTRALIA			AUSTRALIA			SA as a % of Australia	Source Index
			No.	% change		No.	% change			
				Over pre- ceding period	Over same period previous year		Over pre- ceding period	Over same period previous year		
State Accounts										
Gross domestic product (I)										
Current prices	\$m	June qtr 95	8,448	3.7	4.9	115,612	1.3	5.6	7.3	1
1989-90 prices trend	\$m	June qtr 95	7,462	1.3	2.1	104,172	0.3	2.8	7.2	1
Wages, salaries and supplements										
Current prices trend	\$m	June qtr 95	4,172	0.7	2.3	57,522	2.1	7.7	7.3	1
Private final consumption expenditure										
Current prices	\$m	June qtr 95	5,463	4.0	9.0	72,352	1.7	6.9	7.6	1
1989-90 prices trend	\$m	June qtr 95	4,819	1.6	6.2	63,035	0.7	4.3	7.6	1
Private gross fixed capital expenditure										
1989-90 prices trend	\$m	June qtr 95	1,060	-7.6	7.6	17,856	-2.5	1.8	5.9	1
International Accounts										
Exports (excluding re-exports)	\$m	Sep. 95	282.1	-13.3	-16.8	5,913.4	1.9	16.5	4.8	2
Imports	\$m	Sep. 95	203.9	-32.0	-11.9	6,284.9	-8.2	4.6	3.2	2
Consumption and Investment										
Retail turnover										
Current prices original	\$m	Sep. 95	747.5	0.4	11.5	9,603.9	0.0	6.9	7.8	3
Current prices trend	\$m	Sep. 95	776.2	0.6	12.9	9,924.8	0.5	8.0	7.8	3
1989-90 prices original	\$m	Sep. qtr 95	1,886.6	0.8	10.0	24,511.5	1.3	4.4	7.7	3
New motor vehicle registrations										
Original	No.	Sep. 95	3,452	-12.9	-4.6	49,285	-9.0	-2.3	7.0	4
Trend	No.	Sep. 95	3,433	-1.7	2.1	51,190	-2.0	-1.2	6.7	4
Takings, licensed hotels, motels and guest houses with facilities										
	\$'000	June qtr 95	35,802	-5.5	10.0	756,128	-2.6	12.1	4.7	5
Private new capital expenditure										
Current prices original	\$m	June qtr 95	504	10.4	24.2	9,519	20.9	17.3	5.3	6
Current prices trend	\$m	June qtr 95	487	-6.7	14.3	9,233	4.2	19.1	5.3	6
Private new capital expenditure										
	\$m	1994-95	2,072	..	39.0	34,657	..	20.5	6.0	6
Expected private new capital expenditure										
	\$m	6 Months to Dec. 95	n.y.a.	..	n.y.a.	18,963	..	11.7	n.y.a.	6
Expected private new capital expenditure										
	\$m	1995-96	n.y.a.	..	n.y.a.	35,456	..	3.6	n.y.a.	6
Production										
Dwelling unit approvals										
Original	No.	Sep. 95	592	-11.8	-44.8	11,068	-5.0	-39.4	5.3	7
Trend	No.	Sep. 95	587	1.9	-40.0	10,659	-2.0	-35.1	5.5	7
Dwelling unit commencements										
	No.	June qtr 95	1,767	-14.4	-38.6	35,949	1.9	-23.1	4.9	8
Value of non-residential building approvals										
	\$m	Sep. 95	31.1	-1.3	-6.0	864.7	-22.5	53.4	3.6	7
Value of total building activity										
Commenced	\$m	June qtr 95	394.7	37.8	17.1	6,458.9	-5.7	-12.3	6.1	8
Work done	\$m	June qtr 95	333.0	4.9	-6.8	6,972.4	9.1	1.4	4.8	8
Work yet to be done	\$m	June qtr 95	350.9	23.7	5.0	9,475.2	-1.8	3.4	3.7	8
Value of engineering construction work done										
	\$m	June qtr 95	201.0	27.9	0.7	3,713.9	23.1	4.5	5.4	9
Manufacturing production										
Electricity (SA and NT)	mill. kWh	Sep. 95	686	-13.4	-22.6	13,737	-6.3	1.5	5.0	10
Cheese	tonnes	Aug. 95	2,450	12.4	-18.8	13,630	32.9	-0.8	18.0	10
Red meat	tonnes	Sep. 95	20,042	29.3	-9.7	223,585	-1.2	-12.4	9.0	11
Mineral exploration expenditure (other than for petroleum)										
	\$m	June qtr 95	6.6	43.5	13.8	244.6	28.5	10.9	2.7	12

Indicator		Reference period	SOUTH AUSTRALIA			AUSTRALIA			SA as a % of Australia	Source index
			No.	% change		No.	% change			
				Over pre- ceding period	Over same period previous year		Over pre- ceding period	Over same period previous year		
Prices										
CPI - All groups	1989-90=100	Sep. qtr 95	120.1	1.1	4.5	117.6	1.2	5.1	..	13
Price index of materials used in house building	1985-86=100	Sep. 95	153.2	-0.3	-0.4	157.6	-0.1	1.5	..	14
Price index of materials used in building other than houses	1989-90=100	Sep. 95	112.5	0.0	2.5	112.5	0.1	2.9	..	15
Established house price index	1989-90=100	June qtr 95	111.2	-0.4	0.5	112.4	-0.7	1.4	..	16
Price index of project homes	1989-90=100	June qtr 95	114.6	0.2	2.0	108.7	0.6	1.7	..	16
Labour Force and Demography										
Population (resident at end qtr)	'000	Mar. qtr 95	1,473.0	0.1	0.3	18,003.2	0.4	1.1	8.2	17
Labour force										
Original	'000	Oct. 95	719.0	-1.3	-0.1	9,001.7	-1.1	2.4	8.0	18
Trend	'000	Oct. 95	726.3	-0.2	0.7	9,023.9	0.0	2.3	8.0	18
Employed persons										
Original	'000	Oct. 95	650.7	-1.1	0.6	8,262.8	-0.9	2.8	7.9	18
Trend	'000	Oct. 95	656.3	-0.2	1.5	8,254.0	-0.1	3.0	8.0	18
Participation rate										
Original (a)	%	Oct. 95	61.3	-0.9	-0.3	63.4	-0.8	0.6	..	18
Trend (a)	%	Oct. 95	62.0	-0.1	0.2	63.6	-0.1	0.5	..	18
Unemployment rate										
Original (a)	%	Oct. 95	9.5	-0.2	-0.7	8.2	-0.2	-0.4	..	18
Trend (a)	%	Oct. 95	9.6	-0.1	-0.7	8.5	0.0	-0.7	..	18
Job vacancies	'000	Aug. qtr	2.5	-24.2	-44.4	62.0	15.5	-9.8	4.0	19
Average weekly overtime per employee	hours	May qtr 95	1.2	6.4	19.4	1.2	-1.7	-8.5	..	19
Industrial disputes	'000 working days lost	July 95	1.1	-26.7	-68.6	35.9	-59.5	0.3	3.1	20
Short-term overseas visitors arrivals	No.	Aug. 95	5,003	-7.5	33.5	304,903	-7.5	14.9	1.6	21
Short-term resident departures	No.	Aug. 95	10,075	-26.2	0.9	197,531	-15.5	9.7	5.1	21
Incomes										
Average weekly earnings (full-time adults; ordinary time)										
Original	\$	Aug. qtr 95	613.80	0.3	1.9	651.90	0.7	5.1	..	22
Trend	\$	Aug. qtr 95	616.50	0.3	2.6	654.20	1.3	5.1	..	22
Award rates of pay index (full-time adults, weekly)	Jun.1985=100	Sep. 95	146.3	0.0	1.5	144.3	0.1	1.5	..	23
Financial markets										
Secured housing finance	\$m	Sep. 95	259.9	-5.3	-2.3	3,771.1	-6.9	-7.6	6.9	24
Finance commitments										
Personal	\$m	Sep. 95	182.4	-13.0	7.8	2,464.2	-12.0	15.2	7.4	25
Commercial	\$m	Sep. 95	421.6	-15.6	16.7	10,803.3	0.8	30.1	3.9	25
Lease	\$m	Sep. 95	18.2	-9.1	-25.5	567.0	3.5	4.9	3.2	25
Interest rates										
Banks new housing loans (a)	%	Oct. 95	10.50	0.0	1.0	..	26
Small overdraft rate (a)										
Minimum	%	Oct. 95	10.90	0.0	1.4	..	26
Maximum	%	Oct. 95	11.25	0.0	1.3	..	26

(a) Change is shown in terms of percentage points.

FOCUS

State Accounts: Trends in Economic Activity

This article was contributed by Trevor Ward, Public Sector Accounts Section, Australian Bureau of Statistics, Adelaide.

Contribution to Australian Production

The South Australian economy is small by national standards. In 1993-94 it ranked fifth out of eight States and Territories in Gross State Product (GSP) terms and accounted for 7.5% of Gross Domestic Product (GDP). However, when expressed in terms of GSP per head of mean population South Australia's ranking dropped to sixth with only Tasmania and Queensland being lower.

CONTRIBUTION TO AUSTRALIAN PRODUCTION, 1993-94

State/Territory	GSP(l) (\$ million)	Percentage share (%)	Per head of population(\$)
New South Wales	147,288	34.4	24,443
Victoria	112,020	26.1	25,063
Queensland	68,827	16.1	21,799
South Australia	32,177	7.5	21,938
Western Australia	45,356	10.6	26,859
Tasmania	9,098	2.1	19,280
Northern Territory	4,548	1.1	26,674
Australian Capital Territory	9,275	2.2	30,968
Total	428,589	100.0	24,146

GSP per head of population for South Australia has remained fairly constant as a proportion of the Australian total (90.3 % in 1983-84 compared with 90.9% in 1993-94). GSP per head of mean population in South Australia, Queensland and Tasmania has never exceeded the national average.

Growth in GSP

Over the period 1984-85 to 1993-94, South Australia's GSP, at average 1989-90 prices, grew at an average annual compound rate of 2.5%, slightly below the national rate of 2.9%. Annual average growth rates varied significantly between the States, with growth strongest in Western Australia, Northern Territory, ACT and Queensland and weakest in Victoria and Tasmania. The growth in the Territories is, however, from a small base.

AVERAGE ANNUAL COMPOUND GROWTH RATES, 1984-85 TO 1993-94 AT AVERAGE 1989-90 PRICES(a)

State/Territory	GSP	GSP per head of mean population
New South Wales	2.3	1.5
Victoria	2.1	1.1
Queensland	4.5	2.1
South Australia	2.5	1.7
Western Australia	5.1	3.0
Tasmania	1.3	0.5
Northern Territory	5.1	3.3
Australian Capital Territory	5.0	2.8

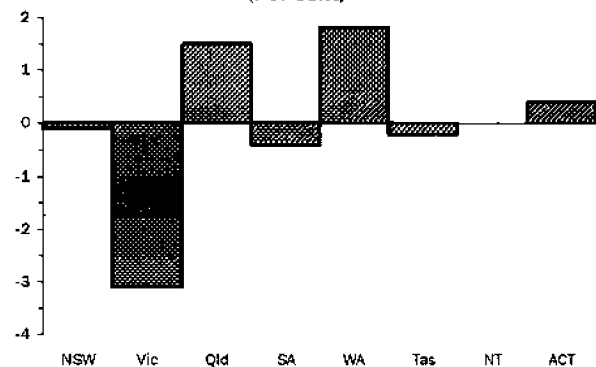
(a) Experimental series. Users are cautioned that these estimates are derived indirectly by calculating a deflator from the expenditure series. It is emphasised that, at times, there may be movements that cannot be fully explained introduced into the constant price GSP(l) series through the use of this proxy deflator.

The northern and western regions of Australia have consistently outperformed the more developed States in the southern and eastern portion of

Australia. There are many factors contributing to the poorer performance of the southern and eastern States including:

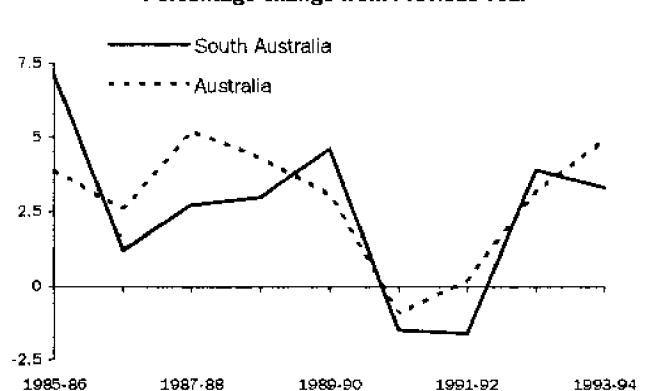
- slower population growths;
- decline in the traditional, labour-intensive manufacturing industries;
- relatively small mining sectors;
- losses in traditional agricultural exports through seasonal and marketing factors; and
- modest growth in the service sector industries.

**CHANGE IN STATES' CONTRIBUTION TO GDP
1983-84 TO 1993-94
(Per cent)**



Although it is more volatile, movement in South Australia's GSP tends to follow the GDP for the Australian economy. The South Australian economy exhibited the highest growth rate in Australia in 1985-86 but grew more slowly during the period 1986-87 to 1988-89. A further two years of decline followed a high growth rate in 1989-90. Apart from Victoria, the South Australian economy declined more in recession than any other State. An above average recovery in 1992-93 was followed by growth close to the rest of Australia in 1993-94.

**GROWTH IN GSP AT AVERAGE 1989-90 PRICES(a)
Percentage change from Previous Year**



(a) Experimental series.

Structure of the State Economy

Differences in the industrial composition of State economies can provide insights into the reasons for differences in the economic performance of States.

The structure of the South Australian and Australian economies are broadly similar, although South Australia:

- is more heavily reliant on manufacturing, agriculture, and community services; with
- mining, finance, and electricity, gas and water contributing significantly less to the South Australian economy than the national average.

INDUSTRY CONTRIBUTION TO GSP (%)

Industry	South Australia		Australia
	1983-84	1993-94	1993-94
Agriculture, forestry, fishing & hunting	7.3	3.8	3.4
Mining	3.3	2.3	4.3
Manufacturing	19.1	18.7	14.8
Electricity, gas & water	3.6	2.8	3.6
Construction	7.2	5.8	6.8
Wholesale & retail trade, accommodation	15.2	15.3	16.4
Transport, storage & communications	7.6	7.8	7.9
Finance & insurance, property and business services	6.4	11.4	12.3
Government administration, education, health & community services	16.8	16.9	15.2
Culture, recreation, personal and other services	3.4	4.0	3.6
Ownership of dwellings	7.8	9.1	9.7
General government	2.4	2.0	2.0
Total	100.0	100.0	100.0

Over the decade to 1993-94, the South Australian economy experienced a structural shift from the primary and secondary sectors to the tertiary sector, in particular finance, property and business services.

Primary industries (agriculture and mining) have declined from 10.6% of GSP in 1983-84 to 6.1% in 1993-94. Most of the decline is attributable to agriculture which has fallen from 7.3% to 3.8% of GSP over this period, and is now only marginally higher than the Australian average of 3.4%. The contribution of mining (3.3% in 1983-84) has declined from a peak of 5.3% in 1985-86 to 2.3% in 1993-94. In terms of its contribution to GSP, South Australia's mining sector is approximately one-fifth the size of Queensland and one-eighth the size of Western Australia.

Unlike most other States where there has been a decline in the contribution of manufacturing to GSP (18.1% in 1983-84 to 14.8% in 1993-94 nationally), manufacturing's share of GSP in South Australia has remained fairly constant at approximately 19%. In 1993-94, manufacturing contributed more to GSP than any other industry in South Australia. Of the other States, only Victoria has such a dominant manufacturing sector (18.6% of GSP in 1993-94).

The fastest growing sector of the State economy has been finance, property and business services which has grown from 6.4% of GSP in 1983-84 to 11.4% in 1994-95.

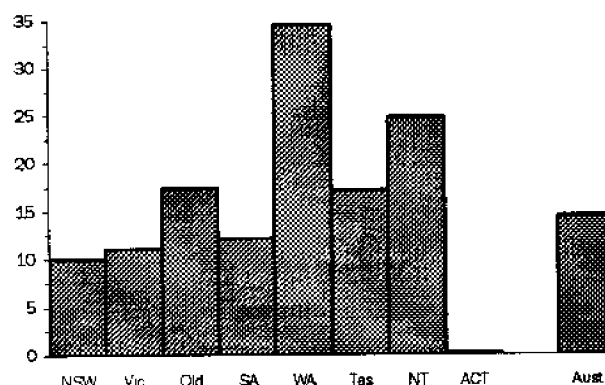
Export Orientation

A measure of the export orientation of an economy is the exports-to-GDP ratio. (Exports in this article refer to overseas exports only as interstate trade figures are not available for each State.)

South Australia, along with New South Wales, Victoria and the ACT has an inward-looking economy. The most export-orientated economies are the fast-growing economies of Western Australia, Northern Territory, and Queensland. Tasmania also has an export-orientated economy although its economy is slow growing.

Generally, States with high exports-to-GDP ratios also have relatively large primary sectors.

EXPORT:GSP RATIO
1993-94

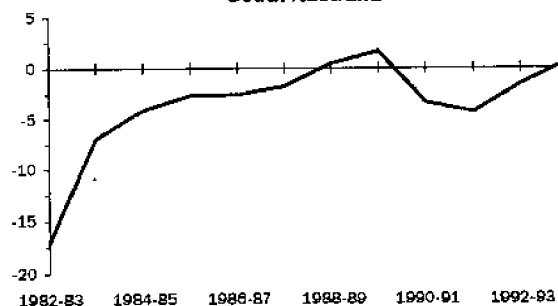


Gross State Product less State Final Demand

The difference between GSP and State Final Demand (SFD) is equal to net interstate and international trade in goods and services, increase in stocks plus the statistical discrepancy. Although these items cannot be separately estimated from the available data, net interstate and international trade in goods and services dominate the long-term movements in this series.

The following graph shows the value of this residual as a percentage of GSP over the years 1982-83 to 1993-94. For most of this period South Australia was a net importer with the two year period 1988-89 to 1989-90 and 1993-94 the only years where it was a marginal net exporter.

GSP LESS STATE FINAL DEMAND
Percentage of GSP
South Australia

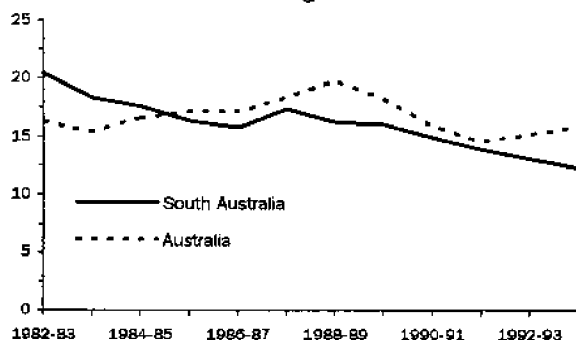


Private Investment

Major resource developments and differences in the timing of property up-swings and down-swings contribute to differences in investment levels by State.

Private investment in South Australia, as a percentage of GSP, has been consistently lower than the rest of Australia since 1984-85 although the gap has narrowed in some years. From a peak of 20% in 1982-83, private investment as a percentage of GSP has fallen to 12.3% in 1993-94. Dwelling expenditure in 1993-94 grew relatively strongly (up 8.5%) but non-dwelling construction continued to decline to levels experienced during the mid 1980s before the property boom of the late 1980s. Expenditure on equipment has declined in the past two years.

PRIVATE GROSS FIXED CAPITAL EXPENDITURE
Percentage of GSP



Household Income

GDP per head does not provide a measure of incomes received by residents, because a proportion of incomes generated in the production process may be transferred to other States or overseas (and conversely income may be received from other States or overseas).

Household income, shown in the table below, measures income received by residents (before the deduction of income taxes) from all sources, including

wages and supplements, unincorporated enterprise income, interest, dividends, and personal benefit payments such as pensions, medical benefits and unemployment benefits.

HOUSEHOLD INCOME PER HEAD OF MEAN POPULATION
1993-94 (DOLLARS)

State/Territory	Household income (per head of mean population)
New South Wales	19,918
Victoria	19,226
Queensland	17,232
South Australia	17,768
Western Australia	19,022
Tasmania	16,186
Northern Territory	17,672
Australian Capital Territory	25,519
Australia	18,977

Household income per head of population in 1993-94 was highest in ACT and lowest in Tasmania. South Australia now ranks fifth having been overtaken by Western Australia recently.

Differences between States are influenced by a range of factors including:

- average level of wages and salaries per employee;
- proportion of the population in employment;
- age distribution of the population;
- level of dwelling rent (including that imputed to owner occupiers).

Further Reference

The information in this article has been extracted from the ABS publication, *Australian National Accounts State: Accounts, 1993-94* (5220.0).

A further reference is the Bureau of Industry Economics publication, *State Economic Performance, 1981-82 to 1991-92*, Occasional paper 19.

Passenger Transport Cost Index

The Australian Bureau of Statistics (ABS) was commissioned to develop the Passenger Transport Cost Index, to measure changes in the costs of operating a public transport passenger bus service in Adelaide. The Index will be compiled on a quarterly basis from September 1995, with results available approximately four weeks from the end of the reference quarter. For enquiries, please contact Warren Tabe, ABS, telephone (08) 237 7608.

SOUTH AUSTRALIAN Year book 1996

Your Complete Reference

The 1996 *South Australian Year Book* is the State's encyclopaedia – nearly 400 pages of information on natural and social environment, geography, government, population, economy, social conditions, agriculture, manufacturing, commerce, finance, tourism, mining and energy industries.

New Features

This edition contains new features on:

- + major events that occurred in 1994–95
- + a regional article on the Fleurieu Peninsula
- + cameos on the Cricket Academy, Adelaide Botanic Gardens and Carrick Hill.

For Order Form see the last page of this publication.

TIME SERIES

STATE ACCOUNTS AT CURRENT PRICES

South Australia

Period	Final consumption expenditure		Gross fixed capital expenditure		State final demand	Gross State product (I)	Wages, salaries and supplements
	Private	Public	Private	Public			
ANNUAL (\$ million)							
1984-85	10,502	3,501	3,048	1,047	18,098	17,372	9,193
1985-86	11,564	3,858	3,162	1,266	19,850	19,343	9,990
1986-87	12,451	4,200	3,255	1,286	21,192	20,657	10,654
1987-88	13,730	4,389	3,964	1,194	23,277	22,863	11,269
1988-89	15,232	4,646	4,149	1,425	25,452	25,567	12,591
1989-90	16,485	5,000	4,489	1,574	27,548	28,020	14,009
1990-91	18,097	5,474	4,228	1,503	29,302	28,321	14,776
1991-92	18,946	5,827	3,999	1,372	30,144	28,861	14,756
1992-93	19,442	6,049	3,953	1,336	30,780	30,289	15,264
1993-94	20,191	6,724	3,958	1,129	32,002	32,176	16,102
1994-95	21,613	6,614	4,964	1,205	34,396	33,782	16,533
PERCENTAGE CHANGE FROM PREVIOUS YEAR							
1985-86	10.1	10.2	3.7	20.9	9.7	11.3	8.7
1986-87	7.7	8.9	2.9	1.6	6.8	6.8	6.6
1987-88	10.3	4.5	21.8	-7.2	9.8	10.7	5.8
1988-89	10.9	5.9	4.7	19.3	9.3	11.8	11.7
1989-90	8.2	7.6	8.2	10.5	8.2	9.6	11.3
1990-91	9.8	9.5	-5.8	-4.5	6.4	1.1	5.5
1991-92	4.7	6.4	-5.4	-8.7	2.9	1.9	-0.1
1992-93	2.6	3.8	-1.2	-2.6	2.1	4.9	3.4
1993-94	3.9	11.2	0.1	-15.5	4.0	6.2	5.5
1994-95	7.0	-1.6	25.4	6.7	7.5	5.0	2.7
QUARTERLY, ORIGINAL (\$ million)							
1992 - 93 -							
March	4,679	1,441	925	298	7,343	7,585	3,682
June	4,838	1,563	1,033	429	7,863	7,557	3,905
1993 - 94 -							
September	4,989	1,629	1,000	238	7,856	7,792	4,034
December	5,331	1,624	1,046	285	8,286	8,469	4,071
March	4,895	1,481	958	234	7,568	7,841	3,891
June	5,011	1,986	1,059	333	8,389	8,051	4,162
1994 - 95 -							
September	5,282	1,620	1,151	240	8,293	8,217	4,081
December	5,617	1,655	1,565	261	9,098	8,972	4,238
March	5,251	1,477	1,091	321	8,140	8,145	3,998
June	5,463	1,862	1,157	383	8,865	8,448	4,216
QUARTERLY, TREND (\$ million)							
1992 - 93 -							
March	4,888	1,514	1,009	342	7,753	7,674	3,850
June	4,937	1,545	1,010	326	7,818	7,814	3,917
1993 - 94 -							
September	4,996	1,567	1,003	298	7,864	7,890	3,962
December	5,044	1,619	1,002	277	7,942	7,957	3,998
March	5,092	1,677	1,000	274	8,043	8,066	4,034
June	5,160	1,717	1,085	265	8,227	8,212	4,077
1994 - 95 -							
September	5,242	1,695	1,224	271	8,432	8,319	4,107
December	5,348	1,646	1,291	298	8,583	8,384	4,122
March	5,463	1,634	1,258	326	8,681	8,475	4,145
June	5,583	1,679	1,171	337	8,770	8,599	4,172
PERCENTAGE CHANGE FROM PREVIOUS QUARTER, TREND							
1992 - 93 -							
June	1.0	2.0	0.1	-4.7	0.8	1.8	1.7
1993 - 94 -							
September	1.2	1.4	-0.7	-8.6	0.6	1.0	1.1
December	1.0	3.3	-0.1	-7.0	1.0	0.8	0.9
March	1.0	3.6	-0.2	-1.1	1.3	1.4	0.9
June	1.3	2.4	8.5	-3.3	2.3	1.8	1.1
1994 - 95 -							
September	1.6	-1.3	12.8	2.3	2.5	1.3	0.7
December	2.0	-2.9	5.5	10.0	1.8	0.8	0.4
March	2.2	-0.7	-2.6	9.4	1.1	1.1	0.6
June	2.2	2.8	-6.9	3.4	1.0	1.5	0.7

STATE ACCOUNTS AT AVERAGE 1989-90 PRICES
South Australia

Period	Final consumption expenditure		Gross fixed capital expenditure		State final demand	Gross State product (I)
	Private	Public	Private	Public		
ANNUAL (\$ million)						
1984-85	14,709	4,498	4,112	1,339	24,658	23,344
1985-86	14,973	4,688	3,850	1,504	25,015	25,011
1986-87	14,933	4,851	3,622	1,437	24,843	25,320
1987-88	15,431	4,877	4,243	1,303	25,854	26,005
1988-89	16,067	4,874	4,281	1,495	26,717	26,777
1989-90	16,485	5,000	4,489	1,574	27,548	28,020
1990-91	17,147	5,212	4,090	1,453	27,902	27,604
1991-92	17,434	5,345	3,834	1,307	27,920	27,188
1992-93	17,451	5,460	3,669	1,251	27,831	28,247
1993-94	17,856	5,752	3,704	1,052	28,242	29,173
1994-95	18,790	5,718	4,531	1,131	30,170	29,492
PERCENTAGE CHANGE FROM PREVIOUS YEAR						
1985-86	1.8	4.2	-6.4	12.3	1.4	7.1
1986-87	-0.3	3.5	-5.9	-4.5	-0.7	1.2
1987-88	3.3	0.5	17.1	-9.3	4.1	2.7
1988-89	4.1	-0.1	0.9	14.7	3.3	3.0
1989-90	2.6	2.6	4.9	5.3	3.1	4.6
1990-91	4.0	4.2	-8.9	-7.7	1.3	-1.5
1991-92	1.7	2.6	-6.3	-10.0	0.1	-1.5
1992-93	0.1	2.2	-4.3	-4.3	-0.3	3.9
1993-94	2.3	5.3	1.0	-15.9	1.5	3.3
1994-95	5.2	-0.6	22.3	7.5	6.8	1.1
QUARTERLY, ORIGINAL (\$ million)						
1992 - 93 -						
March	4,180	1,308	850	281	6,619	7,069
June	4,310	1,420	947	404	7,081	6,984
1993 - 94 -						
September	4,423	1,402	923	223	6,971	7,103
December	4,709	1,386	956	266	7,317	7,908
March	4,319	1,311	868	224	6,722	7,070
June	4,405	1,653	957	313	7,328	7,081
1994 - 95 -						
September	4,623	1,406	1,047	226	7,302	7,189
December	4,903	1,409	1,453	248	8,013	7,954
March	4,543	1,306	986	300	7,135	7,022
June	4,721	1,597	1,045	357	7,720	7,327
QUARTERLY, TREND (\$ million)						
1992 - 93 -						
March	4,377	1,363	928	322	6,990	7,139
June	4,397	1,373	928	306	7,004	7,249
1993 - 94 -						
September	4,432	1,375	921	280	7,008	7,286
December	4,462	1,403	917	261	7,043	7,276
March	4,494	1,441	908	258	7,101	7,280
June	4,539	1,465	985	252	7,241	7,309
1994 - 95 -						
September	4,592	1,448	1,119	256	7,415	7,308
December	4,661	1,419	1,183	281	7,544	7,310
March	4,744	1,419	1,147	306	7,616	7,365
June	4,819	1,456	1,060	315	7,650	7,462
PERCENTAGE CHANGE FROM PREVIOUS QUARTER, TREND						
1992 - 93 -						
June	0.5	0.7	0.0	-5.0	0.2	1.5
1993 - 94 -						
September	0.8	0.1	-0.8	-8.5	0.1	0.5
December	0.7	2.0	-0.4	-6.8	0.5	-0.1
March	0.7	2.7	-1.0	-1.1	0.8	0.1
June	1.0	1.7	8.5	-2.3	2.0	0.4
1994 - 95 -						
September	1.2	-1.2	13.6	1.6	2.4	0.0
December	1.5	-2.0	5.7	9.8	1.7	0.0
March	1.8	0.0	-3.0	8.9	1.0	0.8
June	1.6	2.6	-7.6	2.9	0.4	1.3

MERCHANDISE EXPORTS BY SELECTED COMMODITY GROUP
Final Production in South Australia
(\$'000)

Period	Meat and meat preparations	Cereals and cereal preparations	Wine	Wool and sheepskins	Machinery	Metals and metal manu- factures	Fish and crustaceans	Road vehicles, parts and accessories	Petroleum and petroleum products	Total
ANNUAL										
1988-89	181,058	475,481	71,474	415,098	104,163	239,656	95,720	124,815	189,679	2,451,372
1989-90	244,374	724,369	73,484	285,650	111,944	371,136	111,760	161,704	188,105	2,828,091
1990-91	234,299	587,199	123,567	257,576	152,940	433,341	122,604	117,218	291,507	3,007,137
1991-92	270,237	565,582	165,914	351,096	176,536	489,030	147,532	137,091	341,477	3,431,139
1992-93	282,181	573,375	192,255	318,989	211,426	490,594	154,608	338,359	372,445	3,760,602
1993-94	324,795	436,520	238,367	290,964	223,760	462,352	186,860	351,230	276,474	3,889,780
1994-95	307,716	260,954	250,378	301,644	284,674	570,992	191,351	332,180	285,310	3,824,979
MONTHLY										
1993 - 94 -										
June	26,408	41,603	21,679	26,490	19,147	45,524	12,431	13,030	29,830	333,256
1994 - 95 -										
July	16,853	24,151	17,994	21,467	21,363	28,235	14,862	28,268	8,489	275,117
August	16,427	20,282	22,287	16,510	18,605	43,510	9,563	29,613	26,352	298,093
September	24,651	35,756	29,230	22,493	19,707	45,405	7,706	27,442	39,196	339,143
October	28,580	27,555	29,550	26,817	23,286	32,446	23,210	26,883	23,289	369,985
November	31,665	21,898	15,734	38,562	24,838	39,758	20,372	35,507	28,000	341,288
December	26,513	12,077	14,206	30,424	25,825	45,363	14,894	29,565	13,200	282,784
January	23,308	21,327	12,219	24,480	11,978	66,785	14,201	17,398	29,049	295,745
February	28,109	8,880	17,151	24,988	18,626	32,546	13,945	23,963	11,731	240,897
March	28,257	23,436	23,246	25,726	31,704	70,383	17,167	25,389	33,727	390,667
April	31,720	11,594	25,366	26,052	27,580	63,128	18,015	25,059	21,635	322,341
May	28,661	17,053	21,044	23,984	29,149	67,712	24,111	32,749	11,789	341,783
June	22,972	36,945	22,351	20,141	32,013	35,721	13,305	30,344	38,853	327,136
1995 - 96 -										
July	14,795	31,476	25,413	21,640	29,695	29,974	20,641	23,867	14,477	301,108
August	12,364	13,343	24,974	9,139	32,398	56,643	14,318	24,547	24,036	325,288
September	17,475	15,525	36,047	17,072	21,613	53,042	11,534	20,511	18,655	282,135

MERCHANDISE EXPORTS BY SELECTED COUNTRIES
Final Production in South Australia
(\$'000)

Period	European Community				East Asia					Other East Asia
	United States	Middle East	United Kingdom	Other European Community	New Zealand	Japan	China	Hong Kong	ASEAN	
ANNUAL										
1988-89	184,903	397,324	108,635	247,034	230,263	390,207	51,975	55,474	240,507	75,496
1989-90	229,169	551,953	121,319	291,536	289,970	359,643	86,303	49,273	277,659	95,905
1990-91	321,032	325,450	186,353	294,362	179,193	438,970	146,434	80,640	403,754	102,338
1991-92	300,139	381,761	220,048	330,210	214,522	647,674	148,308	108,583	437,670	150,913
1992-93	352,764	314,049	237,520	357,181	288,421	649,684	208,135	171,803	487,174	198,259
1993-94	393,611	280,499	263,092	307,955	311,999	625,481	220,211	165,163	533,976	189,986
1994-95	328,509	183,980	245,845	306,577	376,229	682,407	177,869	192,696	550,819	280,327
MONTHLY										
1994 - 95 -										
July	36,531	15,015	13,525	12,359	39,604	50,259	10,775	14,820	25,197	13,651
August	25,708	19,773	19,270	27,811	29,886	54,952	20,681	13,367	42,606	13,073
September	25,319	25,907	29,253	26,873	29,220	41,864	17,432	11,876	60,961	23,878
October	29,113	15,689	47,808	27,622	34,532	78,846	17,467	16,293	34,247	23,648
November	33,212	9,184	11,258	21,588	35,786	65,565	14,078	17,070	64,652	23,616
December	23,218	13,049	12,257	28,959	29,641	47,557	11,591	18,008	31,820	30,302
January	20,881	13,813	11,643	25,727	31,359	42,080	13,616	17,019	61,400	20,676
February	22,034	13,923	12,754	16,671	20,292	46,787	13,609	13,980	21,003	22,630
March	35,778	19,072	29,569	37,619	33,970	66,480	18,388	22,656	59,360	22,188
April	25,323	9,691	25,298	19,805	29,172	45,373	13,286	15,268	58,048	33,564
May	26,146	3,626	16,146	38,067	34,686	76,181	13,535	13,441	39,367	31,238
June	25,248	25,238	17,063	23,477	28,082	66,461	13,411	18,897	52,159	21,865
1995 - 96 -										
July	31,380	28,617	20,326	19,751	32,654	50,889	18,583	16,928	35,453	11,482
August	22,443	4,952	30,377	32,136	33,508	63,175	9,536	13,350	59,203	13,738
September	21,253	8,492	24,505	36,102	37,970	44,066	10,067	8,362	30,521	19,827

MERCHANDISE EXPORTS BY INDUSTRY OF ORIGIN
Final Production in South Australia
(\$'000)

Period	Agriculture, forestry and fishing	Mining	Manufacturing					Other/ Confidential	Total
			Food, beverages and tobacco	Petroleum, coal, chemical associated product	Metal product	Machinery and equipment	Other		
ANNUAL									
1988-89	891,978	107,269	515,739	176,037	260,978	270,215	96,203	132,953	2,451,372
1989-90	979,463	133,318	583,544	133,078	406,144	320,349	99,984	172,210	2,828,091
1990-91	804,154	120,930	599,030	264,813	474,541	336,500	155,351	251,818	3,007,137
1991-92	882,011	248,846	702,148	201,681	541,522	381,737	178,485	294,709	3,431,139
1992-93	883,725	294,586	766,518	195,387	509,303	641,930	178,726	290,427	3,760,602
1993-94	732,333	245,247	885,418	180,147	475,059	665,066	208,573	497,938	3,889,781
1994-95	605,552	268,537	867,020	190,978	585,440	707,572	243,538	356,339	3,824,978
MONTHLY									
1994 - 95 -									
July	58,630	1,596	62,524	17,181	30,765	57,419	21,266	25,736	275,117
August	37,559	29,932	56,729	12,164	44,556	55,638	24,020	37,495	298,093
September	58,185	31,213	74,115	17,568	46,256	53,639	17,245	40,922	339,143
October	56,671	23,054	89,131	18,064	33,327	59,284	24,600	65,853	369,985
November	67,178	32,605	75,017	13,817	39,788	70,264	21,677	20,941	341,288
December	46,049	9,123	60,572	14,901	46,285	62,210	18,477	25,169	282,784
January	51,212	36,405	54,129	13,045	68,087	35,775	15,676	21,417	295,745
February	42,169	7,526	64,671	12,493	33,937	49,457	17,229	13,414	240,897
March	54,709	42,788	72,964	13,883	72,673	63,694	19,138	50,818	390,667
April	40,118	5,790	96,617	23,884	64,456	58,983	19,621	12,872	322,341
May	36,369	19,086	84,873	15,326	68,839	70,685	21,321	25,283	341,783
June	56,704	29,420	75,678	18,653	36,471	70,524	23,269	16,419	327,136
1995 - 96 -									
July	65,017	7,842	76,054	18,006	30,863	60,095	18,193	25,039	301,108
August	35,085	32,346	63,762	10,196	57,182	63,110	19,722	43,886	325,288
September	34,747	12,929	81,782	16,207	54,221	48,065	17,523	16,662	282,135

MERCHANDISE IMPORTS BY SELECTED COMMODITY GROUP
State of Final Destination South Australia
(\$'000)

Period	Food, beverages and tobacco	Petroleum and petroleum products	Chemicals	Textiles	Metals and metal manu- factures	Machinery	Road vehicles, parts and accessories	Other manu- factured goods	Total
ANNUAL									
1988-89	60,395	169,397	144,766	47,592	135,225	411,092	415,120	344,344	1,861,622
1989-90	71,796	203,654	167,154	49,249	147,969	462,885	414,800	399,437	2,050,024
1990-91	78,926	425,262	140,894	49,087	135,772	515,226	372,603	366,304	2,193,851
1991-92	82,095	362,777	153,574	62,884	151,165	523,848	435,121	513,012	2,396,954
1992-93	91,756	570,334	186,001	57,434	255,924	609,212	661,714	521,723	3,068,122
1993-94	99,179	404,628	200,226	60,172	160,936	595,238	663,616	484,590	2,803,445
1994-95	115,930	330,432	220,535	64,502	214,428	695,168	749,662	563,388	3,099,639
MONTHLY									
1994 - 95 -									
July	8,221	38,192	15,231	6,675	11,335	53,007	69,239	44,374	254,301
August	7,771	43,158	10,385	5,394	17,333	55,586	70,264	52,102	279,021
September	8,482	20,570	19,869	4,380	15,442	54,068	60,834	37,758	231,418
October	14,848	19,447	11,040	5,653	13,849	56,688	90,244	48,815	269,859
November	12,383	107	15,461	6,952	20,622	56,130	63,462	51,455	240,036
December	9,690	23,355	10,711	3,751	12,863	57,066	51,639	41,335	220,745
January	10,692	39,273	19,760	4,208	12,259	63,883	49,403	48,817	260,849
February	7,889	50,628	17,349	3,931	17,541	53,842	47,177	41,089	251,362
March	8,852	20,952	27,665	6,766	24,054	76,648	63,870	54,293	296,240
April	7,487	25,235	14,810	5,534	18,431	51,590	67,894	48,424	252,672
May	11,288	25,162	33,903	5,619	22,360	52,820	58,222	44,778	267,552
June	8,327	24,353	24,351	5,639	28,339	63,840	57,414	50,148	275,584
1995 - 96 -									
July	9,188	51,035	22,738	7,385	16,289	58,085	53,294	47,464	286,560
August	9,608	23,010	29,079	7,479	24,254	67,843	57,785	67,342	299,834
September	10,407	21,085	12,302	7,164	18,139	45,307	39,876	42,160	203,944

TURNOVER OF RETAIL ESTABLISHMENTS BY INDUSTRY

South Australia

Period	Food retailing	Department stores	Clothing and soft good retailing	Household good retailing	Recreational good retailing	Other retailing	Hospitality and services	Total
ANNUAL (\$ million)								
1985-86	2,086.1	833.3	404.8	607.6	228.0	312.4	938.0	5,408.2
1986-87	2,240.3	893.8	396.8	578.3	229.7	332.3	989.5	5,660.7
1987-88	2,378.5	951.2	416.7	634.5	237.5	367.0	1,082.7	6,068.1
1988-89	2,534.9	971.8	462.2	695.8	268.5	420.7	1,178.7	6,532.6
1989-90	2,679.8	1,041.1	521.1	739.5	291.6	467.1	1,212.9	6,953.1
1990-91	2,978.2	1,069.0	543.9	738.1	303.9	497.7	1,312.6	7,443.4
1991-92	3,163.1	1,087.4	466.5	758.8	278.7	515.7	1,370.6	7,640.8
1992-93	3,018.5	1,101.5	434.2	783.3	311.2	617.4	1,244.7	7,510.8
1993-94	3,152.3	1,107.8	466.1	849.2	354.9	639.6	1,277.8	7,847.7
1994-95	3,360.7	1,128.7	524.0	881.1	359.0	737.8	1,562.3	8,553.6
MONTHLY, ORIGINAL (\$ million)								
1994 - 95 -								
July	264.3	83.8	38.5	68.6	27.4	54.3	110.0	646.9
August	262.4	84.6	37.7	69.1	26.7	57.6	111.9	650.0
September	266.5	87.4	41.3	67.6	26.0	60.3	121.3	670.4
October	275.6	93.3	43.6	73.2	28.2	59.1	127.4	700.4
November	276.9	103.5	43.6	78.0	30.5	63.0	128.0	723.5
December	332.5	175.2	64.0	88.7	45.7	81.4	154.5	942.0
January	275.2	74.0	40.1	72.0	28.9	55.5	137.1	682.8
February	263.4	68.6	34.7	63.5	27.3	54.6	127.7	639.8
March	292.2	85.7	43.1	71.7	29.9	62.0	137.7	722.3
April	282.8	91.0	47.6	70.2	29.5	60.9	140.8	722.8
May	286.6	94.8	46.4	78.4	30.6	64.7	133.9	735.4
June	282.3	86.8	43.4	80.1	28.3	64.4	132.0	717.3
1995 - 96 -								
July	282.3	92.0	41.9	80.2	29.4	65.0	138.9	729.6
August	297.8	86.9	42.7	78.6	30.2	69.9	138.7	744.8
September	301.0	84.0	40.8	72.4	31.0	72.9	145.4	747.5
MONTHLY, TREND (\$ million)								
1994 - 95 -								
August	269.3	94.1	40.6	71.0	28.1	58.2	117.9	679.3
September	272.4	94.1	41.7	70.9	28.7	58.9	120.8	687.6
October	275.0	93.6	43.0	70.9	29.3	59.3	123.0	694.1
November	277.0	93.1	44.3	70.9	29.7	59.4	124.9	699.3
December	278.9	92.9	45.2	71.2	30.0	59.9	127.0	705.1
January	281.0	93.0	45.6	72.0	30.2	60.7	129.8	712.4
February	283.2	93.5	45.6	73.3	30.3	62.1	133.5	721.4
March	285.1	94.3	45.2	75.3	30.4	63.6	137.6	731.4
April	287.1	95.2	44.6	77.4	30.6	65.2	141.3	741.3
May	289.6	95.6	44.1	79.2	31.0	66.6	144.2	750.2
June	292.8	95.7	43.7	80.1	31.3	68.0	146.5	758.1
1995 - 96 -								
July	296.7	95.4	43.4	80.4	31.6	69.4	148.3	765.1
August	300.7	94.9	43.1	80.2	31.7	70.8	149.7	771.2
September	304.9	94.1	42.9	79.7	31.9	72.0	150.9	776.2
PERCENTAGE CHANGE FROM PREVIOUS MONTH, TREND								
1994 - 95 -								
September	1.2	0.0	2.7	-0.1	2.1	1.2	2.5	1.2
October	1.0	-0.5	3.1	0.0	2.1	0.7	1.8	0.9
November	0.7	-0.5	3.0	0.0	1.4	0.2	1.5	0.7
December	0.7	-0.2	2.0	0.4	1.0	0.8	1.7	0.8
January	0.8	0.1	0.9	1.1	0.7	1.3	2.2	1.0
February	0.8	0.5	0.0	1.8	0.3	2.3	2.9	1.3
March	0.7	0.9	-0.9	2.7	0.3	2.4	3.1	1.4
April	0.7	1.0	-1.3	2.8	0.7	2.5	2.7	1.4
May	0.9	0.4	-1.1	2.3	1.3	2.1	2.1	1.2
June	1.1	0.1	-0.9	1.1	1.0	2.1	1.6	1.1
1995 - 96 -								
July	1.3	-0.3	-0.7	0.4	1.0	2.1	1.2	0.9
August	1.3	-0.5	-0.7	-0.2	0.3	2.0	0.9	0.8
September	1.4	-0.8	-0.5	-0.6	0.6	1.7	0.8	0.6

NEW MOTOR VEHICLE REGISTRATIONS BY TYPE OF VEHICLE
South Australia

Period	Original			Seasonally adjusted			Trend estimate		
	Cars and station wagons	Other vehicles	Total	Cars and station wagons	Other vehicles	Total	Cars and station wagons	Other vehicles	Total
ANNUAL									
1983-84	41,204	9,769	50,973
1984-85	45,809	11,795	57,604						
1985-86	40,840	9,620	50,460						
1986-87	29,788	6,430	36,218						
1987-88	29,915	5,775	35,690						
1988-89	31,920	6,816	38,736						
1989-90	35,211	7,808	43,019						
1990-91	34,753	6,619	41,372						
1991-92	32,351	5,333	37,684						
1992-93	32,894	5,577	38,471						
1993-94	32,806	5,781	38,587						
1994-95	35,830	6,736	42,566						
PERCENTAGE CHANGE FROM PREVIOUS YEAR									
1984-85	11.2	20.7	13.0
1985-86	-10.8	-18.4	-12.4						
1986-87	-27.1	-33.2	-28.2						
1987-88	0.4	-10.2	-1.5						
1988-89	6.7	18.0	8.5						
1989-90	10.3	14.6	11.1						
1990-91	-1.3	-15.2	-3.8						
1991-92	-6.9	-19.4	-8.9						
1992-93	1.7	4.6	2.1						
1993-94	-0.3	3.7	0.3						
1994-95	9.2	16.5	10.3						
MONTHLY									
1993 - 94 -									
May	2,672	563	3,235	2,697	549	3,247	2,769	555	3,324
June	3,196	826	4,022	2,951	696	3,648	2,788	567	3,354
1994 - 95 -									
July	2,870	523	3,393	2,902	527	3,428	2,803	558	3,362
August	2,869	513	3,382	2,686	522	3,208	2,820	540	3,360
September	3,140	479	3,619	2,904	489	3,393	2,841	523	3,364
October	2,883	488	3,371	2,797	502	3,300	2,874	515	3,389
November	3,144	589	3,733	2,891	518	3,410	2,913	520	3,433
December	2,941	549	3,490	2,914	545	3,459	2,962	533	3,495
January	2,436	440	2,876	3,177	596	3,773	3,026	553	3,579
February	2,863	502	3,365	3,105	532	3,637	3,075	571	3,646
March	3,333	692	4,025	3,045	587	3,632	3,104	585	3,690
April	2,335	451	2,786	2,786	544	3,331	3,107	591	3,698
May	3,647	695	4,342	3,558	644	4,201	3,081	589	3,670
June	3,369	815	4,184	3,115	683	3,798	3,039	581	3,620
1995 - 96 -									
July	2,546	446	2,992	2,567	455	3,022	2,990	569	3,559
August	3,444	519	3,963	3,189	542	3,731	2,938	556	3,494
September	2,905	547	3,452	2,765	561	3,326	2,891	542	3,433
PERCENTAGE CHANGE FROM PREVIOUS MONTH									
1993 - 94 -									
June	19.6	46.7	24.3	9.4	26.8	12.3	0.7	2.2	0.9
1994 - 95 -									
July	-10.2	-36.7	-15.6	-1.7	-24.3	-6.0	0.5	-1.6	0.2
August	0.0	-1.9	-0.3	-7.4	-0.9	-6.4	0.6	-3.2	-0.1
September	9.4	-6.6	7.0	8.1	-6.3	5.8	0.7	-3.1	0.1
October	-8.2	1.9	-6.9	-3.7	2.7	-2.7	1.2	-1.5	0.7
November	9.1	20.7	10.7	3.4	3.2	3.3	1.4	1.0	1.3
December	-6.5	-6.8	-6.5	0.8	5.2	1.4	1.7	2.5	1.8
January	-17.2	-19.9	-17.6	9.0	9.4	9.1	2.2	3.8	2.4
February	17.5	14.1	17.0	-2.3	-10.7	-3.6	1.6	3.3	1.9
March	16.4	37.8	19.6	-1.9	10.3	-0.1	0.9	2.5	1.2
April	-29.9	-34.8	-30.8	-8.5	-7.3	-8.3	0.1	1.0	0.2
May	56.2	54.1	55.9	27.7	18.4	26.1	-0.8	-0.3	-0.8
June	-7.6	17.3	-3.6	-12.5	6.1	-9.6	-1.4	-1.4	-1.4
1995 - 96 -									
July	-24.4	-45.3	-28.5	-17.6	-33.4	-20.4	-1.6	-2.1	-1.7
August	35.3	16.4	32.5	24.2	19.1	23.5	-1.7	-2.3	-1.8
September	-15.7	5.4	-12.9	-13.3	3.5	-10.9	-1.6	-2.5	-1.7

ACTUAL PRIVATE NEW CAPITAL EXPENDITURE BY SELECTED INDUSTRY AND TYPE OF ASSET
South Australia

Period	Industry			Total	Type of asset	
	Mining	Manufacturing	Other selected industries		New buildings and structures	Equipment, plant and machinery
ANNUAL (\$ million)						
1990-91	122	742	988	1,852	628	1,224
1991-92	193	763	668	1,625	392	1,233
1992-93	218	564	739	1,522	416	1,105
1993-94	97	610	784	1,491	364	1,127
1994-95	129	781	1,161	2,072	382	1,689
PERCENTAGE CHANGE FROM PREVIOUS YEAR						
1991-92	58.4	2.9	-32.3	-12.2	-37.5	0.8
1992-93	12.8	-26.1	10.6	-6.4	6.1	-10.4
1993-94	-55.5	8.1	6.0	-2.0	-12.6	2.0
1994-95	32.7	28.1	48.1	39.0	5.0	49.9
QUARTERLY, ORIGINAL (\$ million)						
1992 - 93 - June	49	147	143	340	57	283
1993 - 94 - September	37	135	187	359	94	265
December	28	136	187	351	75	277
March	10	135	230	375	125	251
June	22	204	180	406	71	335
1994 - 95 - September	19	130	326	475	152	323
December	44	221	370	636	79	557
March	28	204	225	457	75	381
June	38	226	240	504	77	427
PERCENTAGE CHANGE FROM PREVIOUS QUARTER, ORIGINAL						
1993 - 94 - September	-25.1	-8.5	30.6	5.6	64.9	-6.4
December	-24.6	1.2	0.1	-2.1	-20.5	4.5
March	-64.2	-1.0	23.0	6.8	66.7	-9.4
June	123.0	51.1	-21.9	8.2	-43.4	33.8
1994 - 95 - September	-17.0	-36.0	81.6	17.1	115.3	-3.7
December	140.0	69.8	13.3	33.7	-48.2	72.4
March	-36.9	-7.9	-39.2	-28.2	-4.7	-31.6
June	35.7	10.8	6.7	10.4	2.7	12.1
QUARTERLY, TREND (\$ million)						
1992 - 93 - June	n.a.	n.a.	n.a.	368	90	278
1993 - 94 - September				352	81	271
December				351	83	268
March				368	97	271
June				426	112	314
1994 - 95 - September				505	112	393
December				536	95	441
March				522	81	441
June				487	76	411
PERCENTAGE CHANGE FROM PREVIOUS QUARTER, TREND						
1993 - 94 - September	-4.5	-10.9	-2.4
December				-0.2	2.9	-1.1
March				4.8	17.5	0.9
June				15.8	14.7	16.0
1994 - 95 - September				18.5	0.5	25.2
December				6.1	-15.3	12.2
March				-2.6	-14.7	0.0
June				-6.7	-6.2	-6.8

TOURIST ACCOMMODATION
South Australia

Period	Hotels, motels, guest houses with facilities			Holiday flats, units and houses			Short-term caravan parks		
	Number of guest rooms	Room occupancy (per cent)	Takings (\$'000)	Number of flats, units and houses	Unit occupancy (per cent)	Takings (\$'000)	Number of sites	Site occupancy (per cent)	Takings (\$'000)
ANNUAL									
1986-87	8,497	52.9	79,254	n.a.	n.a.	n.a.	18,773	18.1	12,647
1987-88	9,156	50.8	89,321	1,105	45.4	8,109	18,926	17.8	13,248
1988-89	9,396	50.5	102,737	1,171	45.8	9,792	19,195	17.4	14,711
1989-90	10,316	52.0	121,788	1,113	48.4	11,381	19,847	18.4	17,174
1990-91	10,445	48.0	128,634	1,210	43.9	10,339	19,794	17.7	18,102
1991-92	10,745	46.6	130,578	1,302	40.4	10,492	20,601	17.1	19,111
1992-93	10,632	46.5	129,882	1,338	40.2	10,740	20,038	22.3	20,113
1993-94	10,597	48.6	138,782	1,338	40.9	11,700	19,591	23.7	20,790
1994-95	10,594	51	149,698	1,342	40.0	11,645	20,175	24.5	22,536
PERCENTAGE CHANGE FROM PREVIOUS YEAR									
1987-88	7.8	..	12.7	n.a.	..	n.a.	0.8	..	4.8
1988-89	2.6	..	15.0	6.0	..	20.8	1.4	..	11.0
1989-90	9.8	..	18.5	-5.0	..	16.2	3.4	..	16.7
1990-91	1.3	..	5.6	8.7	..	-9.2	-0.3	..	5.4
1991-92	2.9	..	1.5	7.6	..	1.5	4.1	..	5.6
1992-93	-1.1	..	-0.5	2.8	..	2.4	-2.7	..	5.2
1993-94	-0.3	..	6.9	0.0	..	8.9	-2.2	..	3.4
1994-95	0.0	..	7.9	0.3	..	-0.5	3.0	..	8.4
QUARTERLY									
1992 - 93 -									
December	10,763	47.8	36,063	1,323	40.0	2,905	20,462	22.1	5,167
March	10,739	47.0	32,210	1,313	49.9	3,263	20,159	26.6	6,084
June	10,632	46.2	31,175	1,338	36.8	2,359	20,038	22.8	4,961
1993 - 94 -									
September	10,604	46.8	33,133	1,362	35.2	2,551	19,992	19.1	3,916
December	10,650	50.3	38,096	1,377	41.6	3,290	19,925	23.4	5,370
March	10,625	50.0	35,007	1,321	50.9	3,546	19,606	28.4	6,611
June	10,597	47.4	32,547	1,338	36.1	2,313	19,591	24.3	4,893
1994 - 95 -									
September	10,560	48.7	34,734	1,326	34.0	2,418	19,988	20.9	4,211
December	10,608	53.0	41,265	1,360	40.0	3,000	20,126	24.5	5,681
March	10,603	53.4	37,897	1,337	50.1	3,776	20,132	28.4	7,047
June	10,605	50.0	35,802	1,346	35.9	2,451	20,452	24.3	5,597
PERCENTAGE CHANGE FROM PREVIOUS QUARTER									
1992 - 93 -									
March	-0.2	..	-10.7	-0.8	..	12.3	-1.5	..	17.7
June	-1.0	..	-3.2	1.9	..	-27.7	-0.6	..	-18.5
1993 - 94 -									
September	-0.3	..	6.3	1.8	..	8.1	-0.2	..	-21.1
December	0.4	..	15.0	1.1	..	29.0	-0.3	..	37.1
March	-0.2	..	-8.1	-4.1	..	7.8	-1.6	..	23.1
June	-0.3	..	-7.0	1.3	..	-34.8	-0.1	..	-26.0
1994 - 95 -									
September	-0.3	..	6.7	-0.9	..	4.5	2.0	..	-13.9
December	0.5	..	18.8	2.6	..	24.1	0.7	..	34.9
March	0.0	..	-8.2	-1.7	..	25.9	0.0	..	24.0
June	0.0	..	-5.5	0.7	..	-35.1	1.6	..	-20.6

BUILDING APPROVALS **South Australia**

Period	Number of dwelling units				Value (\$ million)			
	Houses		Total(a)		New residential building	Alterations and additions to residential building	Non- residential building	Total building
	Private sector	Total	Private sector	Total				
ANNUAL								
1986-87	5,811	6,706	7,111	9,192	487	82	584	1,152
1987-88	6,276	6,900	7,383	9,009	497	94	749	1,340
1988-89	7,526	8,006	9,642	11,238	690	109	895	1,694
1989-90	7,246	7,675	10,180	11,701	733	110	914	1,757
1990-91	8,351	8,633	10,418	11,426	755	119	591	1,465
1991-92	8,613	8,931	10,254	11,290	756	124	627	1,506
1992-93	9,710	10,087	11,548	12,341	841	133	418	1,392
1993-94	9,470	9,901	11,046	11,777	839	122	375	1,336
1994-95	7,757	8,147	9,208	9,762	740	120	493	1,353
PERCENTAGE CHANGE FROM PREVIOUS YEAR								
1988-89	19.9	16.0	30.6	24.7	38.8	16.0	19.5	26.4
1989-90	-3.7	-4.1	5.6	4.1	6.1	1.2	2.1	3.7
1990-91	15.2	12.5	2.3	-2.4	3.1	8.6	-35.4	-16.6
1991-92	3.1	3.5	-1.6	-1.2	0.1	3.9	6.1	2.8
1992-93	12.7	12.9	12.6	9.3	11.3	7.1	-33.2	-7.6
1993-94	-2.5	-1.8	-4.3	-4.6	-0.2	-8.0	-10.4	-4.0
1994-95	-18.1	-17.7	-16.6	-17.1	-11.8	-1.7	31.5	1.3
MONTHLY, ORIGINAL								
1994 - 95 -								
September	863	913	1,011	1,073	78.3	13.6	33.1	125.0
October	671	691	782	804	57.8	10.3	26.7	94.9
November	796	833	988	1,055	77.6	10.5	30.2	118.3
December	578	606	662	698	54.9	9.4	36.2	100.6
January	515	532	753	774	61.9	8.0	23.4	93.4
February	553	598	632	679	56.3	7.5	26.8	90.6
March	681	747	840	913	70.2	12.6	78.1	160.9
April	403	425	459	481	36.4	6.6	89.3	132.2
May	493	523	549	589	46.3	9.3	35.4	91.0
June	513	554	603	646	50.1	9.2	47.9	107.2
1995 - 96 -								
July	445	463	550	576	45.2	9.0	36.3	90.6
August	564	608	623	671	52.3	11.2	31.5	94.9
September	437	467	547	592	45.0	12.1	31.1	88.2
MONTHLY, TREND								
1994 - 95 -								
September	769	813	910	979	n.a.	n.a.	n.a.	n.a.
October	750	794	894	957				
November	725	770	874	930				
December	692	736	842	891				
January	652	691	796	836				
February	607	641	737	770				
March	560	590	672	700				
April	517	543	611	638				
May	483	506	565	593				
June	457	483	537	570				
1995 - 96 -								
July	441	473	526	567				
August	432	472	528	576				
September	428	478	530	587				
PERCENTAGE CHANGE FROM PREVIOUS MONTH, TREND								
1994 - 95 -								
October	-2.5	-2.3	-1.8	-2.2	n.a.	n.a.	n.a.	n.a.
November	-3.3	-3.0	-2.2	-2.8				
December	-4.6	-4.4	-3.7	-4.2				
January	-5.8	-6.1	-5.5	-6.2				
February	-6.9	-7.2	-7.4	-7.9				
March	-7.7	-8.0	-8.8	-9.1				
April	-7.7	-8.0	-9.1	-8.9				
May	-6.6	-6.8	-7.5	-7.1				
June	-5.4	-4.5	-5.0	-3.9				
1995 - 96 -								
July	-3.5	-2.1	-2.0	-0.5				
August	-2.0	-0.2	0.4	1.6				
September	-0.9	1.3	0.4	1.9				

(a) Total includes the number of self-contained dwelling units approved as part of the construction of non-residential building and alterations to existing buildings (including conversions to dwelling units).

BUILDING COMMENCEMENTS South Australia

Period	Number of dwelling units				Value (\$ million)				
	Houses		Total		New residential building	Alterations and additions to residential building	Non-residential building		Total building
	Private sector	Total	Private sector	Total			Private sector	Total	
ANNUAL									
1983-84	7,666	8,642	9,854	12,200	506.4	49.5	190.3	341.7	897.6
1984-85	8,502	9,641	11,728	14,205	660.3	66.0	345.6	509.7	1,236.0
1985-86	6,334	7,267	8,805	10,705	558.5	80.9	430.7	602.4	1,241.7
1986-87	5,345	6,458	6,524	8,913	475.7	75.3	430.1	674.4	1,225.4
1987-88	5,664	6,388	6,709	8,443	472.9	92.2	527.2	718.8	1,283.8
1988-89	7,132	7,580	8,822	10,235	646.2	103.7	760.3	964.1	1,709.9
1989-90	6,734	7,174	9,412	10,936	718.2	111.6	669.6	934.2	1,763.9
1990-91	7,863	8,177	9,673	10,821	727.5	118.2	367.1	554.0	1,399.6
1991-92	8,036	8,344	9,608	10,671	727.2	125.1	344.5	607.8	1,460.1
1992-93	9,122	9,416	10,881	11,635	816.2	122.4	205.5	458.7	1,397.2
1993-94	9,159	9,590	10,693	11,481	845.3	126.5	209.9	373.0	1,344.8
1994-95	7,752	8,217	9,099	9,750	766.3	124.8	247.6	514.1	1,405.2
QUARTERLY									
1993 - 94 -									
September	2,611	2,776	2,987	3,254	238.4	30.9	42.6	75.3	344.5
December	2,336	2,395	2,672	2,798	205.4	35.6	60.9	106.6	347.7
March	1,977	2,023	2,408	2,549	188.1	29.8	51.1	97.6	315.4
June	2,235	2,396	2,628	2,880	213.4	30.2	55.2	93.5	337.1
1994 - 95 -									
September	2,413	2,526	2,855	3,083	235.6	34.3	57.0	101.8	371.7
December	2,303	2,435	2,670	2,834	221.1	31.8	52.8	99.5	352.4
March	1,631	1,735	1,934	2,064	167.9	26.4	55.6	92.1	286.4
June	1,403	1,519	1,638	1,767	141.8	32.2	82.3	220.7	394.7

VALUE OF BUILDING WORK DONE DURING PERIOD South Australia

Period	New residential building				Alterations and additions to residential buildings	Non-residential building		Total building	
	Houses		Total			Private sector	Total	Private sector	Total
	Private sector	Total	Private sector	Total					
ANNUAL (\$ million)									
1983-84	312.0	348.0	385.2	464.5	48.3	194.8	327.0	627.0	839.8
1984-85	414.4	456.3	542.3	626.7	65.6	285.1	433.4	891.6	1,125.7
1985-86	369.2	411.5	497.9	585.1	78.7	413.6	589.7	988.5	1,253.4
1986-87	310.0	364.8	385.4	492.2	78.4	447.9	645.2	908.1	1,215.8
1987-88	343.8	381.1	391.4	467.7	88.2	551.8	811.2	1,027.0	1,367.1
1988-89	450.2	469.2	538.8	597.0	104.1	657.5	902.2	1,297.3	1,603.3
1989-90	493.8	518.9	657.4	724.9	116.3	743.2	988.6	1,514.0	1,829.8
1990-91	578.3	600.2	713.6	782.3	122.0	621.9	876.6	1,455.4	1,780.8
1991-92	591.5	607.5	693.4	748.5	125.1	310.3	484.1	1,127.5	1,357.6
1992-93	647.2	660.9	743.8	780.6	127.1	297.9	570.9	1,166.3	1,478.6
1993-94	719.1	746.4	828.9	876.3	132.0	217.7	462.1	1,177.2	1,470.4
1994-95	660.7	694.7	768.1	818.4	128.9	264.7	469.6	1158.9	1,416.9
QUARTERLY (\$ million)									
1993 - 94 -									
September	197.3	203.8	224.0	235.7	32.3	59.7	134.7	315.9	402.8
December	178.8	187.6	208.4	222.9	36.5	54.6	119.6	299.4	378.9
March	167.4	172.2	192.3	202.3	32.4	50.2	96.8	274.3	331.5
June	175.7	182.9	204.2	215.3	30.8	53.1	111.0	287.5	357.2
1994 - 95 -									
September	185.6	193.5	215.3	230.8	37.4	63.7	113.5	316.1	381.8
December	185.3	195.7	216.0	231.4	35.6	63.0	117.8	313.1	384.7
March	153.3	159.5	179.5	187.9	25.1	57.2	104.4	261.4	317.4
June	136.4	145.9	157.3	168.3	30.8	80.8	133.9	268.3	333.0

PRODUCTION, SELECTED COMMODITIES
South Australia

<i>Period</i>	<i>Footwear (pairs)</i>	<i>Gas (m megajoules)</i>	<i>Electricity (including NT) ('000 kWh)</i>	<i>Coal (tonnes)</i>	<i>Sawn timber(a) (m3)</i>
ANNUAL					
1985-86	2,209,898	86,893	9,606,839	2,181,713	221,803
1986-87	2,147,468	82,550	9,666,694	2,435,010	194,458
1987-88	1,982,301	83,101	10,137,144	2,566,347	254,453
1988-89	2,062,085	86,546	10,588,647	2,674,215	292,335
1989-90	1,749,112	85,070	10,665,118	2,921,861	228,156
1990-91	1,837,602	73,265	8,878,357	2,441,040	240,193
1991-92	1,852,890	78,210	10,025,649	2,819,880	271,603
1992-93	1,406,178	83,000	10,226,734	2,753,610	317,096
1993-94	1,382,949	89,382	10,560,251	2,643,000	364,961
1994-95	1,430,417	86,123	10,051,056	2,554,560	392,349
PERCENTAGE CHANGE FROM PREVIOUS YEAR					
1986-87	-2.8	-5.0	0.6	11.6	-12.3
1987-88	-7.7	0.7	4.9	5.4	30.9
1988-89	4.0	4.1	4.5	4.2	14.9
1989-90	-15.2	-1.7	0.7	9.3	-22.0
1990-91	5.1	-13.9	-16.8	-16.5	5.3
1991-92	0.8	6.7	12.9	15.5	13.1
1992-93	-24.1	6.1	2.0	-2.4	16.7
1993-94	-1.7	7.7	3.3	-4.0	15.1
1994-95	3.4	-3.6	-4.8	-3.3	7.5
MONTHLY/QUARTERLY (b), ORIGINAL					
1993 - 94 -					
May	122,593	7,173	838,360	239,640	..
June	139,555	7,422	851,000	259,080	98,255
1994 - 95 -					
July	127,210	7,858	885,099	254,640	..
August	129,977	8,529	935,339	229,980	..
September	146,686	7,352	885,856	248,820	97,308
October	130,132	8,074	838,934	105,240	..
November	135,984	7,393	823,049	168,420	..
December	109,496	6,567	845,271	219,240	95,869
January	53,146	6,783	837,610	198,960	..
February	111,711	6,474	833,604	230,340	..
March	148,345	7,088	829,113	210,780	94,383
April	88,951	5,409	733,508	238,680	..
May	119,883	7,095	783,073	205,740	..
June	128,896	7,501	820,600	243,720	104,789
1995 - 96 -					
July	116,044	8,342	878,070	227,340	..
August	123,733	7,667	791,871	214,680	..
September	134,797	6,201	685,549	214,200	121,851
PERCENTAGE CHANGE FROM PREVIOUS MONTH/QUARTER (b)					
1993 - 94 -					
June	13.8	3.5	1.5	8.1	8.8
1994 - 95 -					
July	-8.8	5.9	4.0	-1.7	..
August	2.2	8.5	5.7	-9.7	..
September	12.9	-13.8	-5.3	8.2	-1.0
October	-11.3	9.8	-5.3	-57.7	..
November	4.5	-8.4	-1.9	60.0	..
December	-19.5	-11.2	2.7	30.2	-1.5
January	-51.5	3.3	-0.9	-9.3	..
February	110.2	-4.6	-0.5	15.8	..
March	32.8	9.5	-0.5	-8.5	-1.6
April	-40.0	-23.7	-11.5	13.2	..
May	34.8	31.2	6.8	-13.8	..
June	7.5	5.7	4.8	18.5	11.0
1995 - 96 -					
July	-10.0	11.2	7.0	-6.7	..
August	6.6	-8.1	-9.8	-5.6	..
September	8.9	-19.1	-13.4	-0.2	\$16

(a) From Australian softwood logs only.

(b) Sawn timber production data available quarterly only.

PRODUCTION, LIVESTOCK PRODUCTS AND SELECTED COMMODITIES
South Australia

Period	Chicken	Pigmeat	Beef	Mutton	Lamb	Cheese	Wheat flour, other than self-raising
ANNUAL (tonnes)							
1983-84	33,549	34,740	81,172	23,758	31,114	25,226	78,690
1984-85	35,882	36,508	79,111	35,800	30,136	23,273	74,643
1985-86	34,235	37,432	77,898	41,507	31,485	25,086	73,926
1986-87	33,776	40,761	90,283	43,934	32,416	27,438	80,310
1987-88	34,907	36,671	91,701	45,562	34,335	25,497	91,325
1988-89	32,946	40,364	87,160	42,159	36,203	24,704	96,418
1989-90	35,248	40,815	99,899	50,939	38,052	22,774	88,503
1990-91	31,945	38,644	87,036	65,434	32,038	24,522	83,727
1991-92	36,978	34,538	90,661	72,578	29,941	23,494	81,065
1992-93	38,619	38,153	96,338	65,689	39,334	26,140	87,761
1993-94	40,671	38,529	94,395	71,354	45,199	26,674	84,683
1994-95	39,031	33,033	99,121	66,622	36,197	27,205	80,666
PERCENTAGE CHANGE FROM PREVIOUS YEAR							
1984-85	7.0	5.1	-2.5	50.7	-3.1	-7.7	-5.1
1985-86	-4.6	2.5	-1.5	15.9	4.5	7.8	-1.0
1986-87	-1.3	8.9	15.9	5.8	3.0	9.4	8.6
1987-88	3.3	-10.0	1.6	3.7	5.9	-7.1	13.7
1988-89	-5.6	10.1	-5.0	-7.5	5.4	-3.1	5.6
1989-90	7.0	1.1	14.4	20.8	5.1	-7.8	-8.2
1990-91	-9.4	-5.3	-12.7	28.5	-15.8	7.7	-5.4
1991-92	15.8	-10.6	4.2	10.9	-6.5	-4.2	-3.2
1992-93	4.4	10.5	6.3	-9.5	31.4	11.3	8.3
1993-94	5.3	1.0	-2.0	8.6	14.9	2.0	-3.5
1994-95	-4.0	-14.3	5.0	-6.6	-19.9	2.0	-4.7
MONTHLY (tonnes)							
1993 - 94 -							
May	3,238	3,745	8,186	5,798	4,952	1,962	6,789
June	3,648	3,021	5,377	3,411	4,636	1,497	7,660
1994 - 95 -							
July	3,511	2,787	3,793	2,752	3,159	2,177	5,743
August	2,750	3,104	6,061	3,538	3,272	2,433	6,611
September	3,284	2,550	8,132	7,529	3,934	3,016	6,803
October	3,209	3,094	8,284	6,603	2,509	3,676	5,373
November	2,845	3,784	8,927	8,282	3,244	3,116	7,414
December	3,321	2,929	8,859	6,781	2,816	2,486	7,256
January	3,491	2,368	9,623	6,409	2,972	2,905	6,229
February	3,168	2,684	9,445	5,883	3,128	1,781	7,128
March	3,563	2,285	11,089	6,753	3,703	1,230	7,729
April	3,928	2,069	7,764	5,054	2,691	1,927	6,008
May	3,028	3,009	9,421	4,543	2,723	1,662	7,006
June	2,933	2,370	7,723	2,495	2,046	796	7,366
1995 - 96 -							
July	3,465	2,161	3,526	1,967	1,799	2,180	6,104
August	2,658	2,614	6,588	3,061	3,204	2,450	7,575
September	3,112	2,233	8,863	4,574	4,316	n.y.a.	n.y.a.
PERCENTAGE CHANGE FROM PREVIOUS MONTH							
1993 - 94 -							
June	12.7	-19.3	-34.3	-41.2	-6.4	-23.7	12.8
1994 - 95 -							
July	-3.8	-7.7	-29.5	-19.3	-31.9	45.4	-25.0
August	-21.7	11.4	59.8	28.6	3.6	11.8	15.1
September	19.4	-17.8	34.2	112.8	20.2	24.0	2.9
October	-2.3	21.3	1.9	-12.3	-36.2	21.9	-21.0
November	-11.3	22.3	7.8	25.4	29.3	-15.2	38.0
December	16.7	-22.6	-0.8	-18.1	-13.2	-20.2	-2.1
January	5.1	-19.2	8.6	-5.5	5.5	16.9	-14.2
February	-9.3	13.3	-1.8	-8.2	5.2	-38.7	14.4
March	12.5	-14.9	17.4	14.8	18.4	-30.9	8.4
April	10.2	-9.5	-30.0	-25.2	-27.3	56.7	-22.3
May	-22.9	45.4	21.3	-10.1	1.2	-13.8	16.6
June	-3.1	-21.2	-18.0	-45.1	-24.9	-52.1	5.1
1995 - 96 -							
July	18.1	-8.8	-54.3	-21.2	-12.1	173.9	-17.1
August	-23.3	21.0	86.8	55.6	78.1	12.4	24.1
September	17.2	-14.6	34.5	49.4	34.7	n.y.a.	n.y.a.

CONSUMER PRICE INDEX: BY GROUP
Adelaide

<i>Period</i>	<i>Food</i>	<i>Clothing</i>	<i>Housing</i>	<i>Household equipment and operation</i>	<i>Transport- ation</i>	<i>Tobacco and alcohol</i>	<i>Health and personal care</i>	<i>Recreation and education</i>	<i>All groups</i>
ANNUAL AVERAGE (1989-90 = 100)									
1983-84	67.4	64.1	61.8	69.0	64.3	61.6	71.5	66.1	65.8
1984-85	71.2	68.4	68.3	73.2	68.3	67.2	57.8	68.9	68.9
1985-86	77.0	74.0	73.4	78.9	74.8	72.7	63.2	74.9	74.7
1986-87	83.2	81.8	76.9	84.3	83.0	79.4	75.6	82.1	81.5
1987-88	87.6	88.2	79.5	89.9	88.6	85.7	84.0	89.6	87.0
1988-89	95.2	95.3	87.0	95.1	94.2	92.5	90.8	94.6	93.3
1989-90	100.0	100.0	100.0	100.0	100.0	100.0	100.0	100.0	100.0
1990-91	103.8	103.6	104.1	105.4	107.0	112.0	113.4	104.8	106.2
1991-92	106.0	105.3	100.4	107.5	110.5	118.6	127.8	107.7	108.9
1992-93	109.3	107.0	94.3	107.6	115.0	131.2	134.9	110.7	111.2
1993-94	111.7	106.6	92.1	108.0	117.8	141.5	142.7	113.7	113.4
1994-95	115.1	104.9	97.9	109.2	120.2	148.9	151.3	116.3	116.9
PERCENTAGE CHANGE FROM PREVIOUS YEAR, ANNUAL AVERAGE									
1984-85	5.6	6.7	10.5	6.1	6.2	9.1	-19.2	4.2	4.7
1985-86	8.1	8.2	7.5	7.8	9.5	8.2	9.3	8.7	8.4
1986-87	8.1	10.5	4.8	6.8	11.0	9.2	19.6	9.6	9.1
1987-88	5.3	7.8	3.4	6.6	6.7	7.9	11.1	9.1	6.7
1988-89	8.7	8.0	9.4	5.8	6.3	7.9	8.1	5.6	7.2
1989-90	5.0	4.9	14.9	5.2	6.2	8.1	10.1	5.7	7.2
1990-91	3.8	3.6	4.1	5.4	7.0	12.0	13.4	4.8	6.2
1991-92	2.1	1.6	-3.6	2.0	3.3	5.9	12.7	2.8	2.5
1992-93	3.1	1.6	-6.1	0.1	4.1	10.6	5.6	2.8	2.1
1993-94	2.2	-0.4	-2.3	0.4	2.4	7.9	5.8	2.7	2.0
1994-95	3.0	-1.6	6.3	1.1	2.0	5.2	6.0	2.2	3.1
QUARTERLY (1989-90=100.0)									
1993 - 94 -									
September	110.4	107.5	93.3	107.5	117.3	138.8	138.7	112.8	112.7
December	111.3	107.1	91.6	108.2	117.6	140.0	138.4	113.0	112.8
March	112.0	106.0	91.6	107.9	117.6	142.6	145.5	114.1	113.6
June	113.0	105.8	91.9	108.2	118.5	144.5	148.2	114.8	114.4
1994 - 95 -									
September	114.5	105.2	92.4	108.3	119.6	144.2	148.3	115.1	114.9
December	114.3	105.1	95.6	108.7	119.8	147.8	148.7	116.2	116.0
March	115.7	104.2	100.8	109.5	119.9	150.2	153.0	117.2	117.8
June	115.7	105.1	102.8	110.2	121.4	153.2	155.3	116.5	118.8
1995 - 96 -									
September	117.8	104.8	102.7	111.5	124.4	154.8	155.4	116.5	120.1
PERCENTAGE CHANGE FROM SAME QUARTER OF PREVIOUS YEAR									
1993 - 94 -									
September	2.9	1.4	-2.2	-0.6	3.2	9.7	5.5	3.6	2.4
December	3.0	-0.1	-2.6	0.1	2.2	7.4	4.7	2.8	1.9
March	0.6	-1.1	-2.6	1.1	2.3	8.6	6.4	2.1	1.8
June	2.4	-1.7	-2.0	0.8	2.1	5.9	6.7	2.2	1.9
1994 - 95 -									
September	3.7	-2.1	-1.0	0.7	2.0	3.9	6.9	2.0	2.0
December	2.7	-1.9	4.4	0.5	1.9	5.6	7.4	2.8	2.8
March	3.3	-1.7	10.0	1.5	2.0	5.3	5.2	2.7	3.7
June	2.4	-0.7	11.9	1.8	2.4	6.0	4.8	1.5	3.8
1995 - 96 -									
September	2.9	-0.4	11.1	3.0	4.0	7.4	4.8	1.2	4.5
PERCENTAGE CHANGE FROM PREVIOUS QUARTER									
1993 - 94 -									
December	0.8	-0.4	-1.8	0.7	0.3	0.9	-0.2	0.2	0.1
March	0.6	-1.0	0.0	-0.3	0.0	1.9	5.1	1.0	0.7
June	0.9	-0.2	0.3	0.3	0.8	1.3	1.9	0.6	0.7
1994 - 95 -									
September	1.3	-0.6	0.5	0.1	0.9	-0.2	0.1	0.3	0.4
December	-0.2	-0.1	3.5	0.4	0.2	2.5	0.3	1.0	1.0
March	1.2	-0.9	5.4	0.7	0.1	1.6	2.9	0.9	1.6
June	0.0	0.9	2.0	0.6	1.3	2.0	1.5	-0.6	0.8
1995 - 96 -									
September	1.8	-0.3	-0.1	1.2	2.5	1.0	0.1	0.0	1.1

AVERAGE RETAIL PRICES OF SELECTED CONSUMER ITEMS
Adelaide (cents)

Item	Unit	Quarter				
		Sept. 1994	Dec. 1994	Mar. 1995	June 1995	Sept. 1995
Milk, carton, supermarket sales	1 litre	101	102	104	110	114
Cheese, processed, sliced, wrapped	500g	330	333	317	323	327
Butter	500g	161	159	148	151	163
Bread, white loaf, sliced, supermarket sales	680g	125	128	138	139	148
Self-raising flour	2kg	205	195	216	204	204
Beef:						
Rump steak	1kg	1,180	1,124	1,139	1,121	1,177
Corned silverside	1kg	672	665	653	651	639
Lamb:						
Leg	1kg	507	476	495	533	561
Loin chops	1kg	666	637	677	699	745
Forequarter chops	1kg	500	448	494	507	545
Pork:						
Leg	1kg	598	596	600	589	598
Loin chops	1kg	753	747	745	736	747
Chicken, frozen	1kg	325	331	328	323	330
Bacon, middle rashers	250g pkt	260	244	309	291	296
Sausages	1kg	373	370	373	370	374
Potatoes	1kg	60	95	100	87	106
Onions	1kg	100	109	109	118	181
Peaches, canned	825g	194	185	190	186	190
Eggs, 55g	doz	163	170	181	185	210
Sugar, white	2kg	199	191	189	180	174
Tea	250g	159	165	164	165	162
Coffee, instant, jar	150g	512	521	572	546	563
Margarine, polyunsaturated	500g	140	138	141	152	140
Petrol:						
Leaded(a)	1 litre	71.5	70.8	71.3	72.0	75.3
Unleaded(b)	1 litre	69.7	68.7	69.1	69.8	73.1

(a) Description change only, from super grade to leaded.

(b) Introduced from March quarter 1994.

ESTIMATED RESIDENT POPULATION AND COMPONENTS OF POPULATION CHANGE
South Australia

Period	Live births(a)	Deaths(a)	Components of population change			Total increase	Population at end of period
			Natural increase	Net migration			
				Interstate	Overseas (b)		
ANNUAL							
1984-85	19,901	10,204	9,697	-2,317	4,329	11,149	1,371,197
1985-86	19,657	10,427	9,230	-1,417	5,084	11,353	1,382,550
1986-87	19,628	10,577	9,051	-3,977	6,200	10,214	1,392,764
1987-88	19,288	10,799	8,489	-1,240	5,952	12,145	1,404,909
1988-89	19,528	10,814	8,664	-221	6,665	14,120	1,419,029
1989-90	19,653	11,329	8,253	-252	5,762	13,027	1,432,056
1990-91	19,966	11,120	8,767	1,545	4,619	14,243	1,446,299
1991-92	19,530	11,035	8,532	-133	2,897	11,296	1,457,595
1992-93	19,686	11,163	8,403	-4,650	1,546	5,299	1,462,894
1993-94	20,030	11,733	8,230	-3,466	2,126	6,890	1,469,371
1994-95	19,559	11,496	9,950	n.y.a.	n.y.a.	n.y.a.	n.y.a.
MONTHLY/QUARTERLY							
1994 - 95 -							
July	1,409	1,040
August	1,789	1,165
September	1,333	1,005	1,334	-1,380	761	715	1,470,086
October	1,546	942
November	2,013	1,025
December	1,525	963	2,135	-1,249	279	1,165	1,471,251
January	1,757	911
February	1,408	656
March	1,872	935	2,513	-2,054	1,292	1,751	1,473,002
April	1,393	820
May	1,805	1,095
June	1,709	939	3,968	n.y.a.	n.y.a.	n.y.a.	n.y.a.
1995 - 96 -							
July	1,505	930
August	1,615	1,152
September	1,722	904	3,938	n.y.a.	n.y.a.	n.y.a.	n.y.a.
October	1,508	983

(a) Registrations

(b) Includes category jumping.

LABOUR FORCE STATUS OF THE CIVILIAN POPULATION
South Australia

Period	Employed Full-time Males	Employed Full-time Females	Employed Part-time Males	Employed Part-time Females	Employed Total Males	Employed Total Females	Unem- ployed Males	Unem- ployed Females	Labour Force Males	Labour Force Females
ANNUAL AVERAGE ('000)										
1985-86	336.3	134.3	24.4	98.9	360.7	233.2	32.2	22.4	392.9	255.6
1986-87	337.1	137.0	25.4	106.6	362.5	243.6	35.6	24.5	398.1	268.1
1987-88	334.4	137.4	29.3	111.6	363.7	249.0	35.1	24.9	398.8	273.9
1988-89	345.5	145.3	29.7	115.8	375.2	261.1	32.2	22.5	407.4	283.6
1989-90	352.0	149.3	31.5	119.8	383.5	269.1	28.5	20.9	412.0	290.0
1990-91	345.2	148.4	34.1	125.7	379.3	274.1	37.8	25.3	417.1	299.4
1991-92	323.3	145.7	37.5	121.6	360.8	267.3	50.0	29.3	410.8	296.6
1992-93	322.2	143.2	39.2	126.8	361.4	270.0	51.9	29.9	413.3	299.9
1993-94	322.0	146.3	40.0	127.0	362.0	273.3	47.3	29.9	409.3	303.2
1994-95	241.5	114.4	33.0	97.8	274.5	212.2	33.6	21.3	308.1	233.5
PERCENTAGE CHANGE FROM PREVIOUS YEAR, ANNUAL AVERAGE										
1986-87	0.2	2.0	4.1	7.8	0.5	4.5	10.6	9.4	1.3	4.9
1987-88	-0.8	0.3	15.4	4.7	0.3	2.2	-1.4	1.6	0.2	2.2
1988-89	3.3	5.7	1.4	3.8	3.2	4.9	-8.3	-9.6	2.2	3.5
1989-90	1.9	2.8	6.1	3.5	2.2	3.1	-11.5	-7.1	1.1	2.3
1990-91	-1.9	-0.6	8.3	4.9	-1.1	1.9	32.6	21.1	1.2	3.2
1991-92	-6.3	-1.8	10.0	-3.3	-4.9	-2.5	32.3	15.8	-1.5	-0.9
1992-93	-0.3	-1.7	4.5	4.3	0.2	1.0	3.8	2.0	0.6	1.1
1993-94	-0.1	2.2	2.0	0.2	0.2	1.2	-8.9	0.0	-1.0	1.1
1994-95	-25.0	-21.8	-17.5	-23.0	-24.2	-22.4	-28.9	-28.8	-24.7	-23.0
MONTHLY, ORIGINAL ('000)										
1994 - 95 -										
October	329.2	151.6	37.7	128.0	366.9	279.6	43.6	29.5	410.5	309.1
November	322.8	155.5	41.5	126.3	364.2	281.9	42.2	29.7	406.5	311.6
December	322.3	153.2	41.7	132	364.0	285.2	45.1	28.9	409.0	314.1
January	320.2	153.0	40.9	122.3	361.1	275.3	50.4	26.0	411.5	301.4
February	328.2	154.7	43.6	127.9	371.8	282.6	45.5	30.9	417.3	313.4
March	317.8	151.5	47.8	130.7	365.6	282.2	43.7	30.4	409.3	312.5
April	320.4	149.4	47.7	132.8	368.1	282.2	42.7	28.8	410.8	311.0
May	321.6	154.9	46.3	133.5	367.9	288.3	43.2	26.1	411.1	314.4
June	315.6	149.3	48.7	140.0	364.2	289.3	47.0	25.1	411.2	314.3
1995 - 96 -										
July	323.1	150.3	45.7	137.9	368.8	288.2	41.5	25.0	410.3	313.2
August	323.2	149.1	45.7	139.2	369.0	288.3	43.4	24.1	412.4	312.4
September	326.4	148.7	46.6	136.3	373.0	285.0	44.9	25.8	418.0	310.8
October	324.7	148.9	44.6	132.5	369.3	281.4	43.5	24.7	412.8	306.1
MONTHLY, TREND ('000)										
1994 - 95 -										
October	326.2	151.2	38.6	130.6	364.8	281.8	44.5	30.1	409.2	311.9
November	324.5	151.7	39.8	129.8	364.3	281.5	44.4	29.0	408.6	310.5
December	322.9	152.0	41.3	129.0	364.2	281.0	44.2	28.2	408.4	309.2
January	321.7	152.1	43.0	128.8	364.7	280.9	44.0	27.7	408.7	308.6
February	320.8	152.3	44.6	129.1	365.4	281.4	44.0	27.4	409.4	308.8
March	320.2	152.6	45.9	130.1	366.1	282.7	44.2	27.3	410.3	310.0
April	320.1	152.9	46.8	131.7	366.9	284.6	44.5	27.3	411.3	311.9
May	320.5	152.9	47.1	133.5	367.6	286.4	44.7	27.2	412.3	313.6
June	321.3	152.4	47.1	135.2	368.4	287.6	44.9	27.0	413.3	314.5
1995 - 96 -										
July	322.6	151.5	46.7	136.3	369.3	287.8	44.8	26.5	414.2	314.3
August	324.0	150.4	46.3	136.8	370.3	287.2	44.7	26.1	415.0	313.3
September	325.3	149.3	45.8	136.9	371.1	286.2	44.5	25.8	415.6	312.0
October	326.0	148.3	45.4	136.6	371.4	284.9	44.4	25.6	415.8	310.5
PERCENTAGE CHANGE FROM PREVIOUS MONTH, TREND										
1994 - 95 -										
November	-0.5	0.3	3.1	-0.6	-0.1	-0.1	-0.2	-3.7	-0.1	-0.4
December	-0.5	0.2	3.8	-0.6	0.0	-0.2	-0.5	-2.8	0.0	-0.4
January	-0.4	0.1	4.1	-0.2	0.1	0.0	-0.5	-1.8	0.1	-0.2
February	-0.3	0.1	3.7	0.2	0.2	0.2	0.0	-1.1	0.2	0.1
March	-0.2	0.2	2.9	0.8	0.2	0.5	0.5	-0.4	0.2	0.4
April	0.0	0.2	2.0	1.2	0.2	0.7	0.7	0.0	0.2	0.6
May	0.1	0.0	0.6	1.4	0.2	0.6	0.4	-0.4	0.2	0.5
June	0.2	-0.3	0.0	1.3	0.2	0.4	0.4	-0.7	0.2	0.3
1995 - 96 -										
July	0.4	-0.6	-0.8	0.8	0.2	0.1	-0.2	-1.9	0.2	-0.1
August	0.4	-0.7	-0.9	0.4	0.3	-0.2	-0.2	-1.5	0.2	-0.3
September	0.4	-0.7	-1.1	0.1	0.2	-0.3	-0.4	-1.1	0.1	-0.4
October	0.2	-0.7	-0.9	-0.2	0.1	-0.5	-0.2	-0.8	0.0	-0.5

LABOUR FORCE STATUS OF THE CIVILIAN POPULATION AGED 15 AND OVER

South Australia

Period	Civilian Population aged 15 and over (000) Males	Civilian Population aged 15 and over (000) Females	Unemploy- ment rate Ages 15-19 (%) Persons	Unemploy- ment rate All Ages (%) Males	Unemploy- ment rate All Ages (%) Females	Unemploy- ment rate All Ages (%) Persons	Partici- pation rate (%) Males	Partici- pation rate (%) Females	Partici- pation rate (%) Persons
ANNUAL AVERAGE									
1984-85	518.8	538.9	22.1	9.0	9.6	9.2	74.9	45.4	59.9
1985-86	526.9	545.6	20.6	8.2	8.8	8.4	75.6	46.8	60.5
1986-87	534.8	552.4	22.1	8.9	9.1	9.0	74.4	48.5	61.3
1987-88	542.4	560.0	20.8	8.8	9.1	8.9	73.5	48.9	61.0
1988-89	547.9	566.9	17.8	7.9	7.9	7.9	74.3	50.0	62.0
1989-90	552.4	573.4	16.2	6.9	7.2	7.1	74.6	50.6	62.4
1990-91	558.3	579.8	19.2	9.1	8.4	8.8	74.7	51.6	63.0
1991-92	563.9	585.4	25.0	12.1	9.9	11.2	72.9	50.7	61.6
1992-93	567.4	588.9	26.6	12.6	10.0	11.5	72.8	51.0	61.7
1993-94	570.6	592.0	28.3	11.5	9.8	10.8	71.7	51.2	61.3
1994-95	573.7	594.7	25.2	10.9	9.2	10.2	71.5	52.4	61.8
PERCENTAGE CHANGE FROM PREVIOUS YEAR, ANNUAL AVERAGE									
1985-86	1.6	1.2
1986-87	1.5	1.2
1987-88	1.4	1.4
1988-89	1.0	1.2
1989-90	0.8	1.1
1990-91	1.1	1.1
1991-92	1.0	1.0
1992-93	0.6	0.6
1993-94	0.6	0.6
1994-95	0.6	0.5
MONTHLY, ORIGINAL									
1994 - 95 -									
July	572.4	593.6	25.3	10.4	9.7	10.1	71.4	52.8	61.9
August	572.7	593.8	27.3	10.9	9.3	10.2	71.1	51.9	61.3
September	572.9	594.0	28.3	10.9	9.6	10.3	71.6	53.0	62.1
October	573.2	594.2	29.3	10.6	9.6	10.2	71.6	52.0	61.6
November	573.4	594.4	26.1	10.4	9.5	10.0	70.9	52.4	61.5
December	573.6	594.6	25.6	11.0	9.2	10.2	71.3	52.8	61.9
January	573.9	594.8	24.3	12.3	8.6	10.7	71.7	50.7	61.0
February	574.2	595.0	25.1	10.9	9.8	10.4	72.7	52.7	62.5
March	574.4	595.2	21.3	10.7	9.7	10.3	71.3	52.5	61.7
April	574.6	595.4	23.9	10.4	9.2	9.9	71.5	52.2	61.7
May	574.7	595.6	22.0	10.5	8.3	9.6	71.5	52.8	62.0
June	574.9	595.8	24.3	11.4	8.0	9.9	71.5	52.8	62.0
1995 - 96									
July	575.0	595.9	23.8	10.1	8.0	9.2	71.3	52.6	61.8
August	575.1	596.1	27.2	10.5	7.7	9.3	71.7	52.4	61.9
September	575.3	596.2	27.5	10.7	8.3	9.7	72.7	52.1	62.2
October	575.5	596.5	n.y.a.	10.5	8.1	9.5	71.7	51.3	61.3
MONTHLY, TREND									
1994 - 95 -									
July	n.a.	n.a.	n.a.	10.9	10.2	10.6	71.6	52.4	61.8
August				10.9	10.1	10.6	71.6	52.6	61.9
September				10.9	10.0	10.5	71.5	52.6	61.9
October				10.9	9.7	10.3	71.4	52.5	61.8
November				10.9	9.4	10.2	71.3	52.2	61.6
December				10.8	9.1	10.1	71.2	52.0	61.4
January				10.8	9.0	10.0	71.2	51.9	61.4
February				10.8	8.9	9.9	71.3	51.9	61.4
March				10.8	8.8	9.9	71.4	52.1	61.6
April				10.8	8.8	9.9	71.6	52.4	61.8
May				10.8	8.7	9.9	71.7	52.7	62.0
June				10.9	8.6	9.9	71.9	52.8	62.2
1995 - 96 -									
July				10.8	8.4	9.8	72.0	52.7	62.2
August				10.8	8.3	9.7	72.2	52.6	62.2
September				10.7	8.3	9.7	72.3	52.3	62.1
October				10.7	8.3	9.6	72.3	52.1	62.0

AVERAGE WEEKLY EARNINGS OF EMPLOYEES
South Australia

Period	Full-time adults						All employees		
	Ordinary time earnings			Total earnings					
	Males	Females	Persons	Males	Females	Persons	Males	Females	Persons
ANNUAL AVERAGE (\$ per week)									
1983-84	358.30	294.50	339.90	377.60	300.20	355.20	346.60	218.30	294.00
1984-85	381.90	319.30	364.80	407.40	325.80	385.10	367.20	238.70	316.20
1985-86	406.30	340.50	388.30	431.80	346.60	408.40	389.00	252.70	334.50
1986-87	431.80	363.70	412.20	455.90	370.20	431.20	411.80	268.90	352.20
1987-88	458.60	389.70	438.40	485.00	397.00	459.20	440.10	295.10	379.60
1988-89	481.50	424.30	465.70	517.60	435.10	494.90	473.40	315.10	408.50
1989-90	517.50	454.90	499.40	560.70	466.50	533.50	511.60	338.00	437.80
1990-91	561.30	486.10	537.90	598.90	496.10	566.90	546.70	358.10	462.00
1991-92	588.40	524.10	567.80	624.90	534.00	595.80	564.80	386.90	483.70
1992-93	610.10	534.90	585.40	646.40	546.80	613.70	560.00	382.60	477.40
1993-94	625.10	547.60	600.00	667.50	560.10	632.70	595.10	396.60	503.30
1994-95	632.70	559.10	608.20	681.70	572.50	645.30	599.90	411.90	513.40
PERCENTAGE CHANGE FROM PREVIOUS YEAR									
1984-85	6.6	8.4	7.3	7.9	8.5	8.4	5.9	9.3	7.6
1985-86	6.4	6.6	6.4	6.0	6.4	6.1	5.9	5.9	5.8
1986-87	6.3	6.8	6.2	5.6	6.8	5.6	5.9	6.4	5.3
1987-88	6.2	7.1	6.4	6.4	7.2	6.5	6.9	9.7	7.8
1988-89	5.0	8.9	6.2	6.7	9.6	7.8	7.6	6.8	7.6
1989-90	7.5	7.2	7.2	8.3	7.2	7.8	8.1	7.3	7.2
1990-91	8.5	6.9	7.7	6.8	6.3	6.3	6.9	5.9	5.5
1991-92	4.8	7.8	5.6	4.3	7.6	5.1	3.3	8.0	4.7
1992-93	3.7	2.1	3.1	3.4	2.4	3.0	-0.8	-1.1	-1.3
1993-94	2.5	2.4	2.5	3.3	2.4	3.1	6.3	3.7	5.4
1994-95	1.2	2.1	1.4	2.1	2.2	2.0	0.8	3.9	2.0
QUARTERLY (\$ per week)									
1992 - 93 -									
19 February	610.10	533.30	584.80	648.50	543.90	614.10	559.50	381.60	477.70
20 May	610.00	543.70	589.00	645.10	557.10	617.20	565.50	385.30	484.50
1993 - 94 -									
20 August	631.00	546.90	603.30	673.30	559.50	635.80	599.70	394.20	503.10
19 November	626.50	543.20	599.40	667.10	554.90	630.70	583.50	386.70	492.50
18 February	619.90	548.80	597.30	665.30	558.80	631.50	601.30	405.50	512.80
20 May	622.90	551.40	599.80	664.30	567.10	632.90	595.80	399.80	504.80
1994 - 95 -									
19 August	628.20	553.70	602.60	674.20	566.70	637.20	591.40	410.80	507.40
18 November	619.10	558.00	598.60	667.50	572.80	635.70	586.90	410.20	505.10
17 February	648.40	560.80	619.90	699.90	572.80	658.50	620.10	415.80	527.90
19 May	635.10	563.90	611.70	685.20	577.80	649.90	601.10	410.80	513.30
18 August	639.90	560.10	613.80	684.50	571.80	647.60	600.80	408.60	510.20
PERCENTAGE CHANGE FROM CORRESPONDING REFERENCE DATE IN PREVIOUS YEAR									
1993 - 94 -									
18 February	1.6	2.9	2.1	2.6	2.7	2.8	7.5	6.3	7.3
20 May	2.1	1.4	1.8	3.0	1.8	2.5	5.4	3.8	4.2
1994 - 95 -									
19 August	-0.4	1.2	-0.1	0.1	1.3	0.2	-1.4	4.2	0.9
18 November	-1.2	2.7	-0.1	0.1	3.2	0.8	0.6	6.1	2.6
17 February	4.6	2.2	3.8	5.2	2.5	4.3	3.1	2.5	2.9
19 May	2.0	2.3	2.0	3.1	1.9	2.7	0.9	2.8	1.7
18 August	1.9	1.2	1.9	1.5	0.9	1.6	1.6	-0.5	0.6
PERCENTAGE CHANGE FROM PREVIOUS REFERENCE DATE									
1992 - 93 -									
20 May	0.0	2.0	0.7	-0.5	2.4	0.5	1.1	1.0	1.4
1993 - 94 -									
20 August	3.4	0.6	2.4	4.4	0.4	3.0	6.0	2.3	3.8
19 November	-0.7	-0.7	-0.6	-0.9	-0.8	-0.8	-2.7	-1.9	-2.1
18 February	-1.1	1.0	-0.4	-0.3	0.7	0.1	3.1	4.9	4.1
20 May	0.5	0.5	0.4	-0.2	1.5	0.2	-0.9	-1.4	-1.6
1994 - 95 -									
19 August	0.9	0.4	0.5	1.5	-0.1	0.7	-0.7	2.8	0.5
18 November	-1.4	0.8	-0.7	-1.0	1.1	-0.2	-0.8	-0.1	-0.5
17 February	4.7	0.5	3.6	4.9	0.0	3.6	5.7	1.4	4.5
19 May	-2.1	0.6	-1.3	-2.1	0.9	-1.3	-3.1	-1.2	-2.8
18 August	0.8	-0.7	0.3	-0.1	-1.0	-0.4	0.0	-0.5	-0.6

FINANCE COMMITMENTS **South Australia**

<i>Secured housing finance commitments to individuals</i>						
<i>Construction and purchase of dwellings</i>						
<i>Period</i>	<i>Number of dwelling units</i>	<i>Amount (\$ million)</i>	<i>Alterations and additions (\$ million)</i>	<i>Personal finance commitments (\$ million)</i>	<i>Commercial finance commitments (\$ million)</i>	<i>Lease finance commitments (\$ million)</i>
ANNUAL						
1983-84	27,968	894.0	45.2	n.a.	n.a.	n.a.
1984-85	28,484	1,127.6	48.2	n.a.	n.a.	n.a.
1985-86	21,714	920.1	48.9	1,203.9	3,492.7	339.8
1986-87	21,658	965.5	47.1	1,222.4	4,242.8	334.5
1987-88	26,582	1,266.6	47.0	1,448.9	6,486.6	392.1
1988-89	29,977	1,574.2	51.4	1,534.1	7,285.5	512.4
1989-90	25,650	1,438.2	45.8	1,525.7	6,926.4	445.4
1990-91	28,694	1,731.3	58.8	1,503.6	6,257.0	323.2
1991-92	31,765	2,083.8	88.8	1,456.7	6,666.4	256.2
1992-93	36,960	2,569.5	102.8	1,656.8	5,122.4	249.5
1993-94	45,725	3,387.9	221.8	1,840.5	5,467.2	250.6
1994-95	36,414	2,878.6	242.2	2,152.2	5,752.1	271.5
PERCENTAGE CHANGE FROM PREVIOUS YEAR						
1984-85	1.8	26.1	6.6	n.a.	n.a.	n.a.
1985-86	-23.8	-18.4	1.5	n.a.	n.a.	n.a.
1986-87	-0.3	4.9	-3.7	1.5	21.5	-1.6
1987-88	22.7	31.2	-0.2	18.5	52.9	17.2
1988-89	12.8	24.3	9.4	5.9	12.3	30.7
1989-90	-14.4	-8.6	-10.9	-0.5	-4.9	-13.1
1990-91	11.9	20.4	28.4	-1.4	-9.7	-27.4
1991-92	10.7	20.4	51.0	-3.1	6.5	-20.7
1992-93	16.4	23.3	15.8	13.7	-23.2	-2.6
1993-94	23.7	31.9	115.8	11.1	6.7	0.5
1994-95	-20.4	-15.0	9.2	16.9	5.2	8.3
MONTHLY						
1994 - 95 -						
July	3,419	263.8	20.6	163.2	432.6	26.5
August	3,580	276.2	25.0	170.0	701.4	25.6
September	3,209	248.5	17.5	169.2	361.3	24.5
October	3,051	234.0	20.1	163.5	417.6	20.6
November	3,228	252.4	20.9	191.0	493.2	19.7
December	2,839	220.6	20.6	174.5	575.3	23.0
January	2,643	210.3	15.6	160.8	348.7	21.4
February	2,629	215.4	20.9	169.6	411.0	17.3
March	3,228	260.7	21.4	206.7	468.1	20.8
April	2,390	192.8	19.0	156.6	397.4	14.3
May	2,923	236.9	18.9	193.6	588.8	26.0
June	3,290	268.2	21.7	233.5	556.7	31.7
1995 - 96 -						
July	3,013	243.5	19.3	192.7	529.9	27.4
August	3,315	256.7	17.9	209.6	499.6	20.0
September	3,167	241.8	18.2	182.4	421.6	18.2
PERCENTAGE CHANGE FROM PREVIOUS MONTH						
1994 - 95 -						
August	4.7	4.7	21.4	4.2	62.1	-3.4
September	-10.4	-10.0	-30.0	-0.5	-48.5	-4.3
October	-4.9	-5.8	14.9	-3.4	15.6	-16.0
November	5.8	7.9	4.0	16.8	18.1	-4.1
December	-12.1	-12.6	-1.4	-8.6	16.6	16.5
January	-6.9	-4.7	-24.3	-7.9	-39.4	-7.0
February	-0.5	2.4	34.0	5.5	17.9	-19.1
March	22.8	21.0	2.4	21.9	13.9	19.9
April	-26.0	-26.0	-11.2	-24.2	-15.1	-31.0
May	22.3	22.9	-0.5	23.6	48.2	81.8
June	12.6	13.2	14.8	20.6	-5.4	21.9
1995 - 96 -						
July	-8.4	-9.2	-11.1	-17.5	-4.8	-13.7
August	10.0	5.4	-7.0	8.8	-5.7	-26.9
September	-4.5	-5.8	1.4	-13.0	-15.6	-9.1

PUBLICATIONS SOURCE INDEX

- 1 *Australian National Accounts: State Accounts* (5242.0) Quarterly
- 2 *International Merchandise Trade, Australia* (5422.0) Quarterly
- 3 *Retail Trade, Australia* (8501.0) Monthly
- 4 *New Motor Vehicles Registrations, Australia, Preliminary* (9301.0) Monthly
- 5 *Tourist Accommodation, Australia* (8635.0) Quarterly
- 6 *State Estimates of Private New Capital Expenditure* (5646.0) Quarterly
- 7 *Building Approvals, Australia* (8731.0) Monthly
- 8 *Building Activity, Australia* (8752.0.40.001) Quarterly
- 9 *Engineering Construction Activity, Australia* (8762.0.40.001) Quarterly
- 10 *Manufacturing Production, Australia, Preliminary* (8301.0) Monthly
- 11 *Livestock Products, Australia* (7215.0) Monthly
- 12 *Actual and Expected Private Mineral Exploration, Australia* (8412.0) Quarterly
- 13 *Consumer Price Index* (6401.0) Quarterly
- 14 *Price Index of Materials Used in House Building, Six State Capital Cities and Canberra* (6408.0) Monthly
- 15 *Price Index of Materials Used in Building Other Than House Building, Six State Capital Cities and Canberra* (6407.0) Monthly
- 16 *House Price Indexes: Eight Capital Cities* (6416.0) Quarterly
- 17 *Australian Demographic Statistics* (3101.0) Quarterly
- 18 *The Labour Force, Australia, Preliminary* (6202.0) Monthly
- 19 *Job Vacancies and Overtime, Australia* (6354.0) Quarterly
- 20 *Industrial Disputes, Australia* (6321.0) Monthly
- 21 Unpublished overseas arrival and departure statistics on microfiche
- 22 *Average Weekly Earnings, States and Australia* (6302.0) Quarterly
- 23 *Award Rates of Pay Indexes, Australia* (6312.0) Monthly
- 24 *Housing Finance for Owner Occupation, Australia* (5609.0) Monthly
- 25 Unpublished statistics available from PC AUSSTATS
- 26 *Reserve Bank of Australia Bulletin*

ABS PUBLICATIONS AND PRODUCTS

Statistics collected by the ABS are generally made available to clients in published form. Some, including those not published, are available in one or more of the following forms: microfiche, magnetic tape, computer printout, CD, floppy disk, photocopy and clerically extracted tabulation.

Current publications produced by the ABS are listed in the *Catalogue of Publications and Products, Australia* (1101.0). The ABS also issues on Tuesdays and Fridays a *Release Advice* (1105.0) which lists publications to be released within the next few days. The Catalogue and Publications Advice are available from any ABS Office.

To receive ABS publications on a regular basis contact the *ABS Publication Mailing Service* on (008) 02 0608.

A large range of data is available via on-line services, diskette, magnetic tape, tape cartridge and CD ROM. For more details about our electronic data services, contact any ABS Office.

The *ABS Information Consultancy Service* has specialist staff to assist and advise clients with

their statistical inquiries. For more detailed information about these services call at the ABS, 55 Currie Street, Adelaide, telephone the Information Officer on (08) 237 7100, or write to Information Service, ABS, GPO Box 2272, Adelaide 5001.

The ABS also provides a *Statistical Consultancy Service*, for expert assistance in survey, sample and questionnaire design, data collection, processing and analysis, and statistical modelling. For more information contact Gary Niedorfer, telephone (08) 237 7379.

SYMBOLS AND OTHER USAGES

n.a. not available
 n.y.a. not yet available
 .. not applicable
 0, 0.0 nil or rounded to zero

Where figures have been rounded, discrepancies may occur between sums of the component items and totals.



SOUTH AUSTRALIAN Year book 1996

All you need to know about SA

YOUR COMPLETE REFERENCE

The 1996 *South Australian Year Book* is the State's encyclopaedia – nearly 400 pages of information on natural and social environment, geography, government, population, economy, social conditions, agriculture, manufacturing, commerce, finance, tourism, mining and energy industries.

NEW FEATURES

This edition contains new features on:

- ✦ *major events that occurred in 1994–95*
- ✦ *a regional article on the Fleurieu Peninsula*
- ✦ *cameos on the Cricket Academy, Adelaide Botanic Gardens and Carrick Hill.*

ORDER FORM

Please send me.....copies of the *South Australian Year Book 1996* (1301.4)
@ \$30.00 per copy (including postage).

PAYMENT DETAILS

(Cheques should be made payable to **CPM – Australian Bureau of Statistics** and stamped **Not Negotiable**.)

☐ Cheque

☐ Money Order

☐ Bankcard

☐ Mastercard

☐ Visa

Credit Card No.: _____ Expiry Date: _____

Name on card: _____

Cardholders signature: _____

CUSTOMER DETAILS

Name: _____

Address: _____

Postcode: _____

Telephone No.: _____ Fax No.: _____

Please send your completed form and payment to:

Reply Paid 5057
The ABS Bookshop
Australian Bureau of Statistics
GPO Box 2272
ADELAIDE SA 5001

© Commonwealth of Australia 1995

Recommended retail price: \$12.00



2130740012952

ISSN 1039-8880